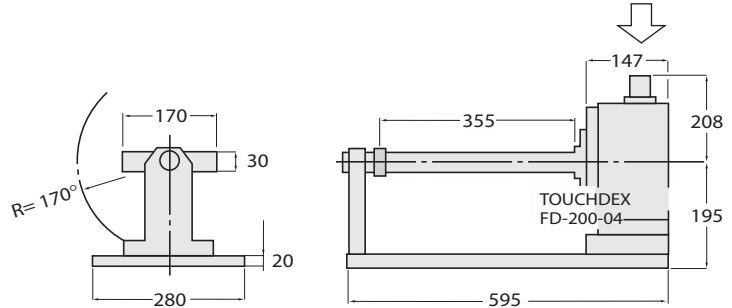
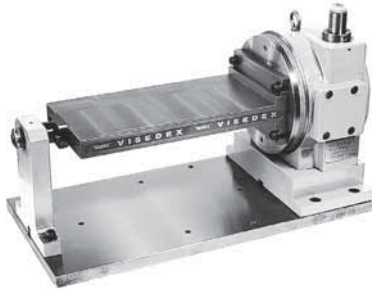
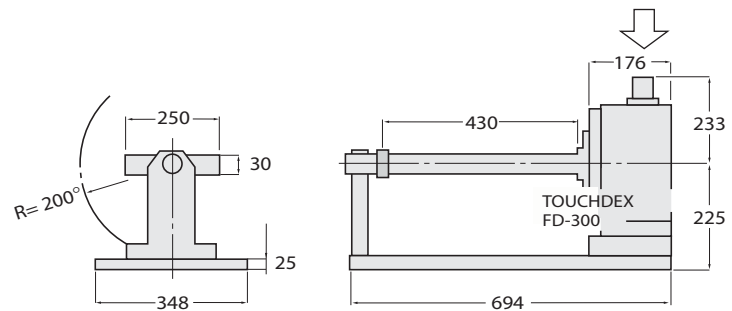
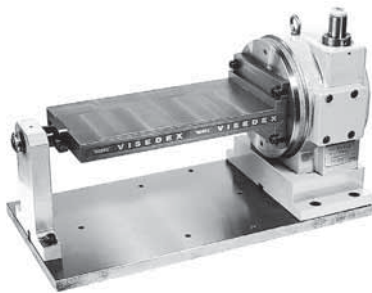


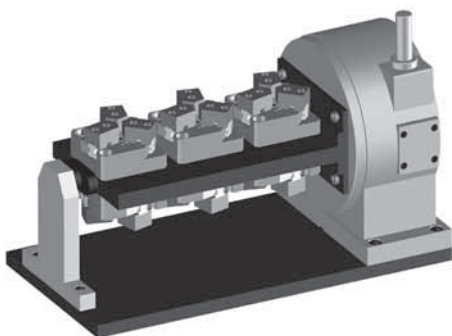
Code	Modèle	Indexation angulaire		Course piston mm	A mm
		Min	Max		
51 99 13 11	FDV-201-04	5°	90°	78	208



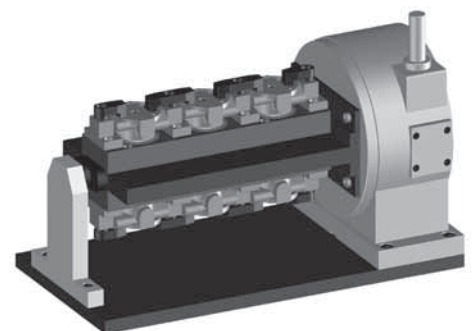
Code	Modèle	Indexation angulaire		Course piston mm	A mm
		Min	Max		
51 99 13 12	FDV-301	5°	45°	75	233



Exemples

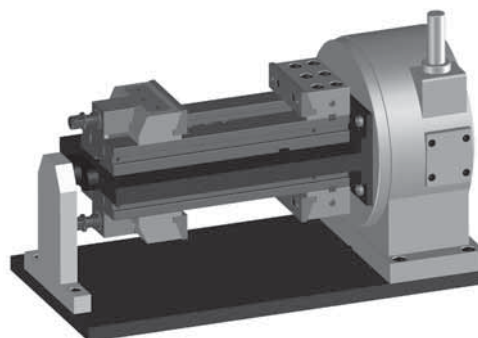


Avec base statique manuelle MACC-3



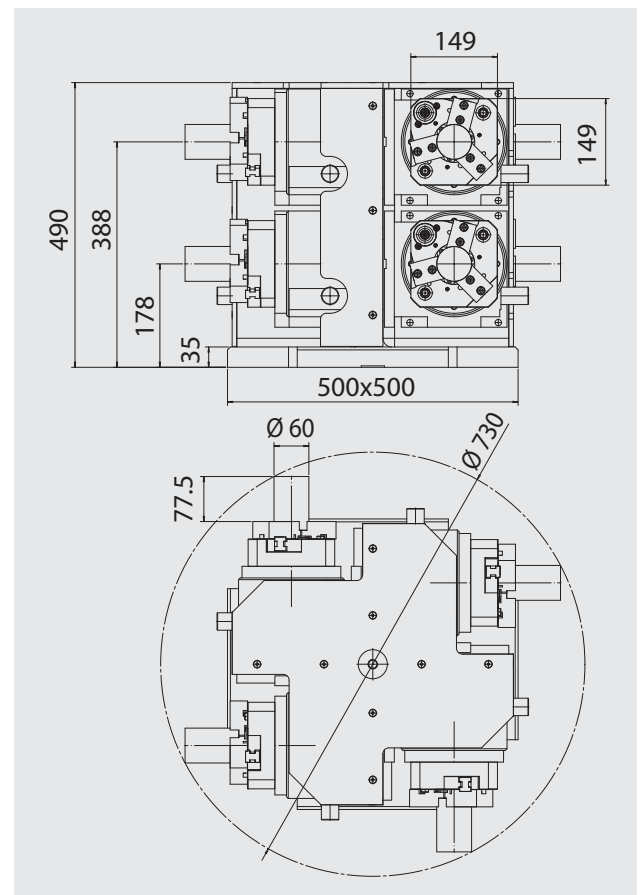
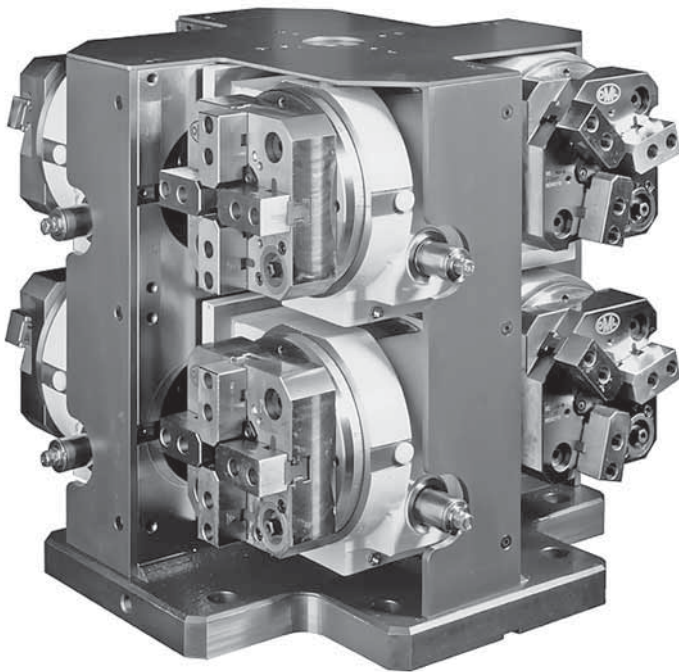
Avec dispositifs de serrage manuels

Avec étaux TC-t à serrage manuel

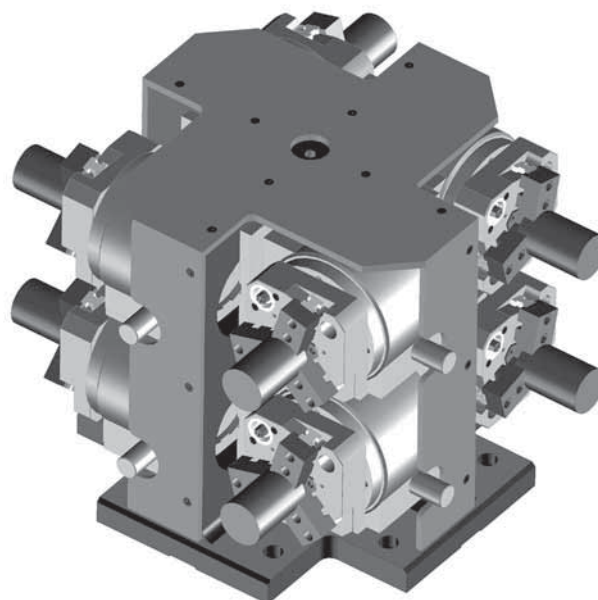


"MULTIDEX"

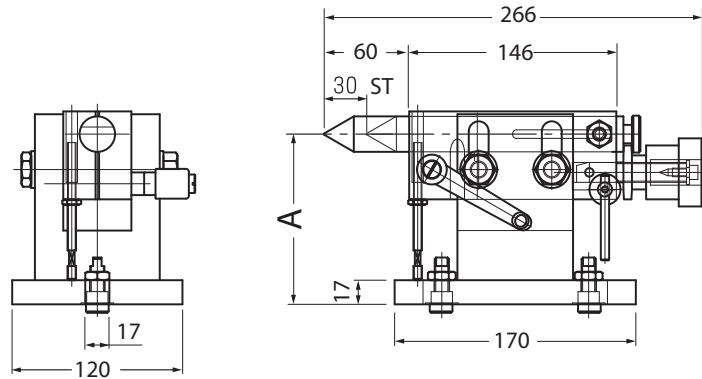
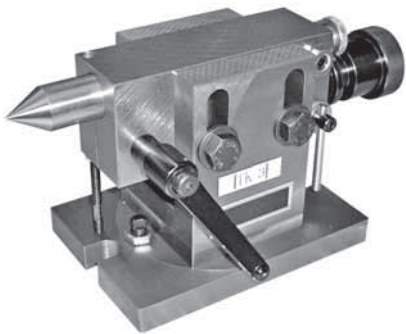
Montage d'usinage "4 AXES" pour centre d'usinage horizontal intégré avec les diviseurs automatiques mécaniques "TOUCHDEX" pour l'usinage des 5 faces de vos pièces.



Code	Modèle
33 58 98 01	MULTIDEX FDM 150 avec base statique MACC3-150
33 58 98 02	MULTIDEX FDM 150 avec base statique MACC4-150

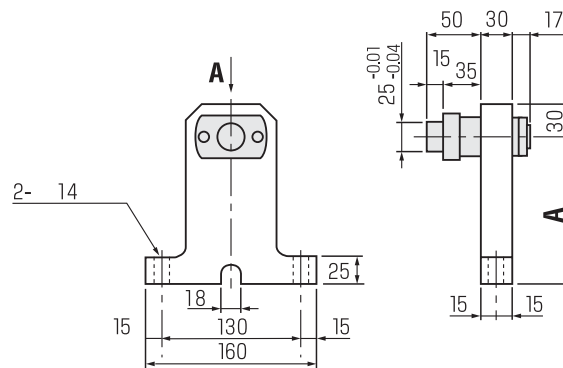
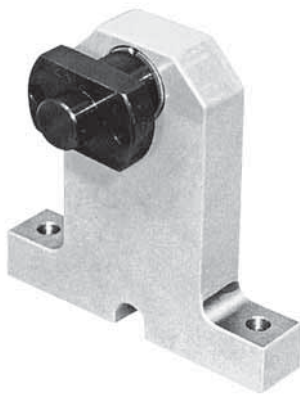


Contre pointe manuelle TK3



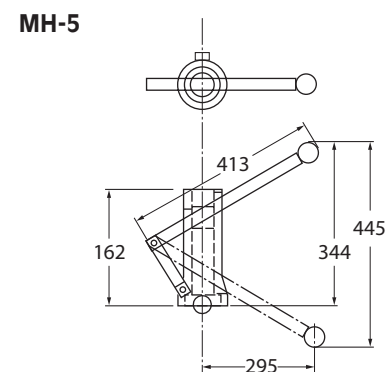
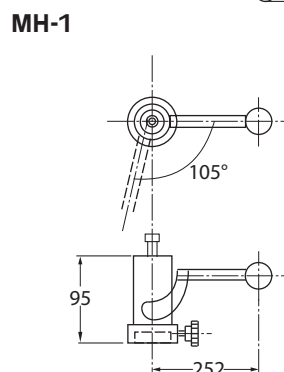
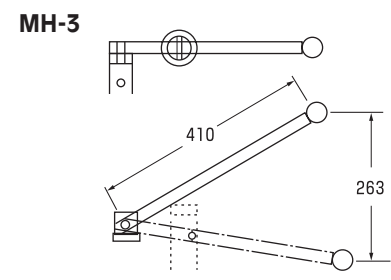
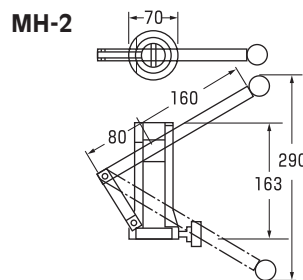
Code	type	A (mm)
51 99 13 21	TK-3	120 - 145
51 99 13 22	TK-3 HI	160 - 185

Palier

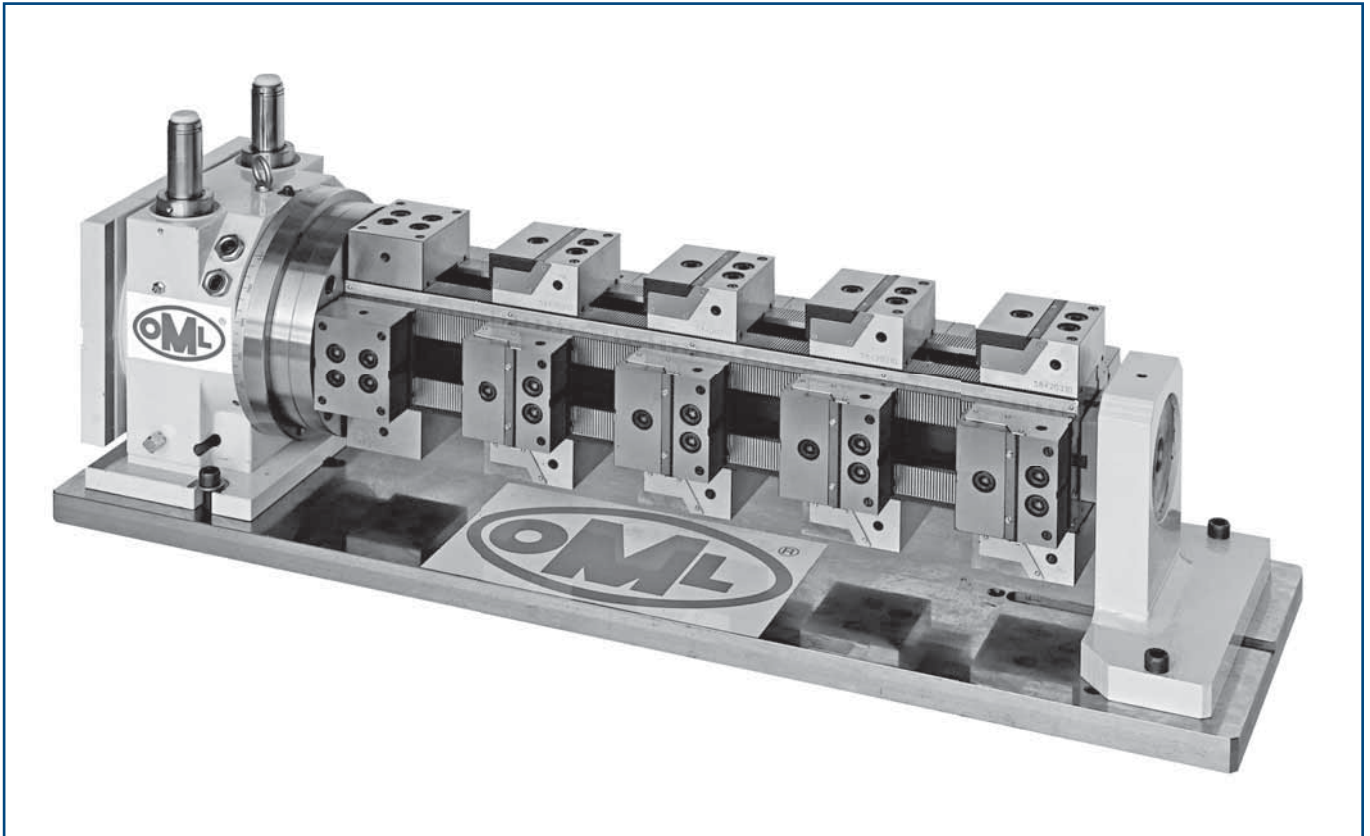


Code	type	A (mm)
51 99 13 23	FES-120	120
51 99 13 24	FES-135	135
51 99 13 25	FES-145	145
51 99 13 26	FES-175	175
51 99 13 27	FES-185	185
51 99 13 28	FES-200	200

Poignée manuelle



Code	type	course
51 99 13 30	MH-1	35
51 99 13 31	MH-2	88
51 99 13 32	MH-3	38
51 99 13 48	MH-5	95



Présentation de l'application:

- Diviseur TOUCHDEX
- Colonne 4 faces CIVI 2000 (catalogue général OML rubrique 6)
- Mors durs lisse mobiles CV90 (catalogue général OML rubrique 6)



Présentation de l'application:

- Diviseur TOUCHDEX avec mandrin manuel SGS-F