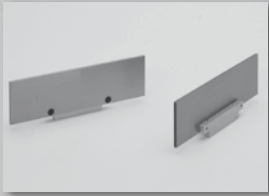
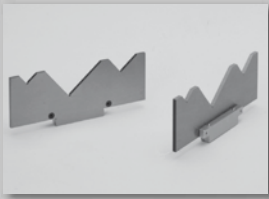


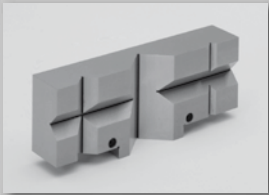
Set of parallels (quick change)
pag. 4. 3



Parallels (quick change)
pag. 4. 4



Angular parallels (quick change)
pag. 4. 5



V jaw (quick change)
pag. 4. 5



Soft jaws (quick change)
Steel
Aluminium
pag. 4. 6



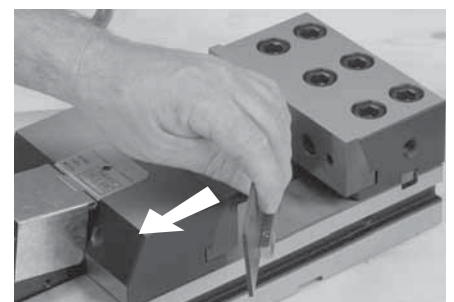
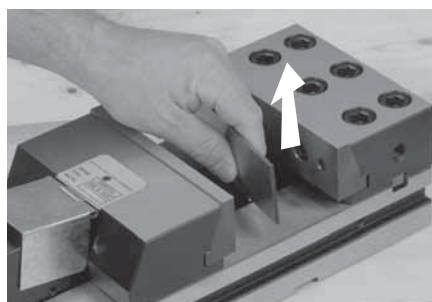
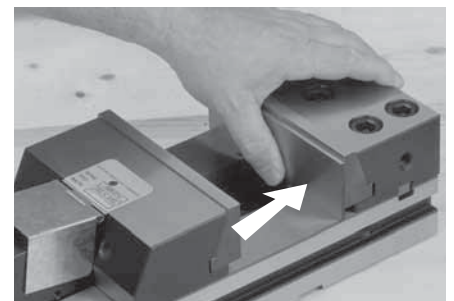
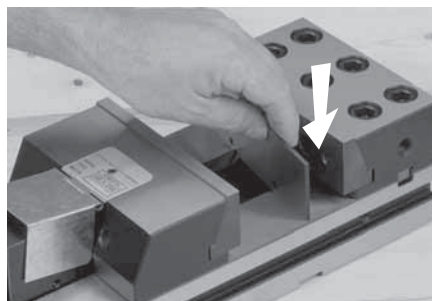
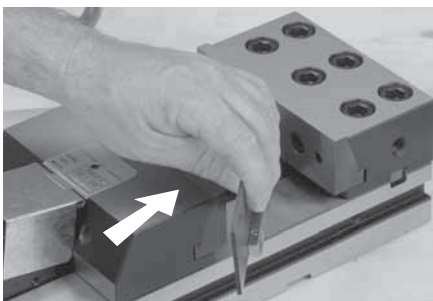
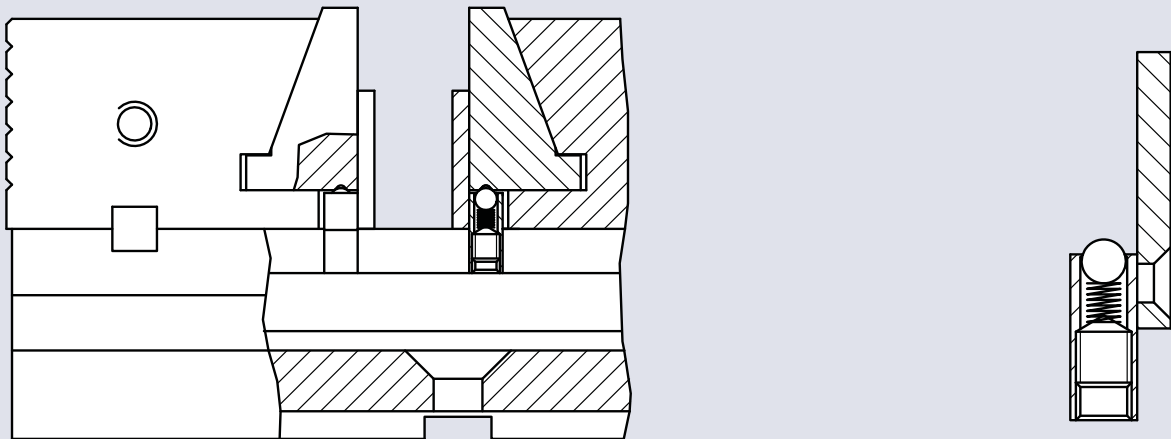
This new patented system allows the quick change of parallels, angular parallels, V-jaws, soft jaws for any type of workpieces.

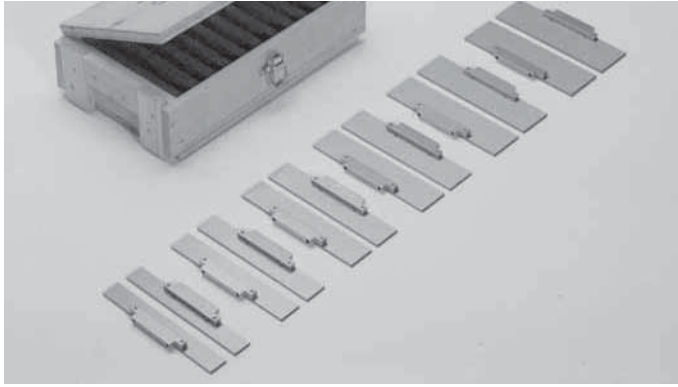
Benefits:

- Reduce downtime and set-up time
- Elimination of clamps and locks thanks to the patented self locking system
- Increase the accuracy of finished parts and reduce scrap

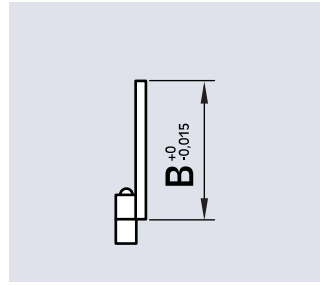
All components are case hardened and precision ground.

The CLAK system can be used for either the TC range or the MC range.

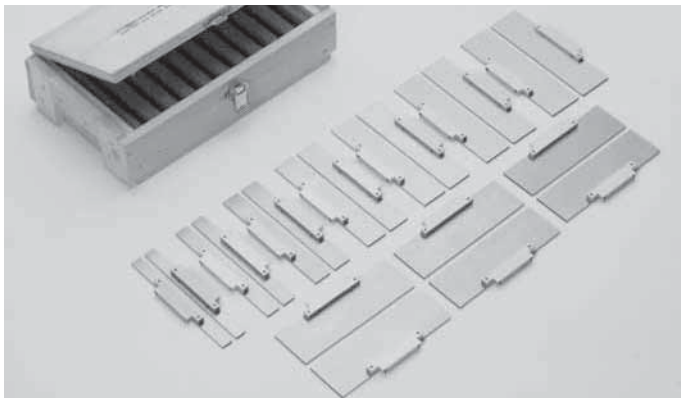




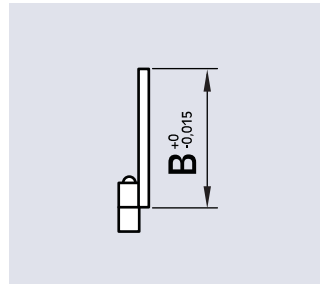
Set of 6 pairs of parallels



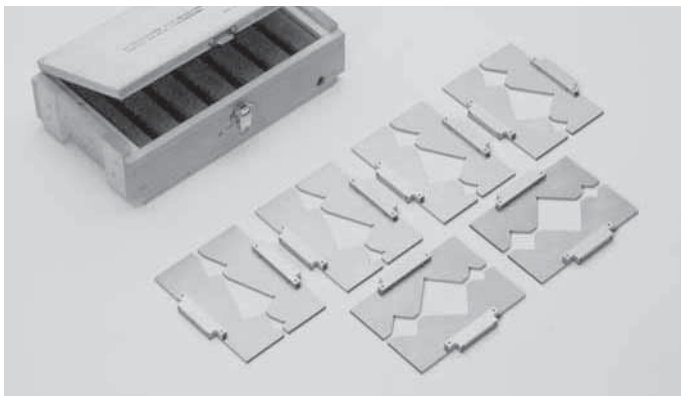
Codice-Nr.	per Modello	B mm					
		10	15	20	25	30	35
58 01 92 06	TC 110 x .../MC 125 x ...						
58 02 92 06	TC 150 x .../MC 150 x ...	20	25	30	35	40	45
58 03 92 06	TC 200 x .../MC 200 x ...	20	30	40	50	60	65



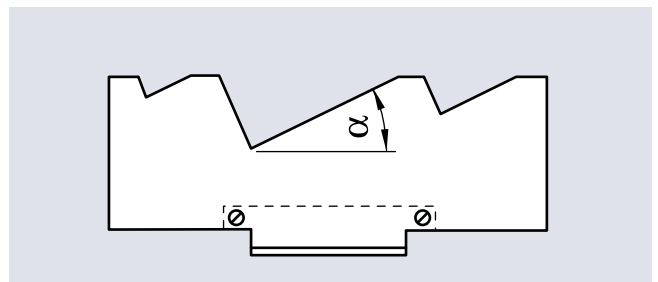
Set of 10 pairs of parallels



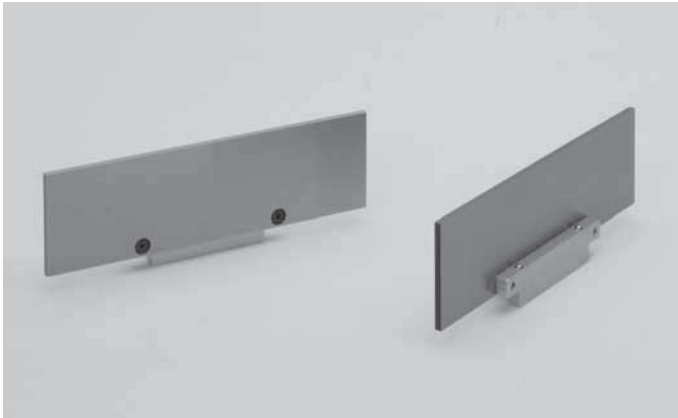
Cod.	for type	B mm									
		10	12	15	20	25	28	30	33	35	37
58 01 92 10	TC 110 x .../MC 125 x ...										
58 02 92 10	TC 150 x .../MC 150 x ...	12	15	20	25	30	35	40	43	45	47
58 03 92 10	TC 200 x .../MC 200 x ...	20	25	30	35	40	45	50	55	60	65



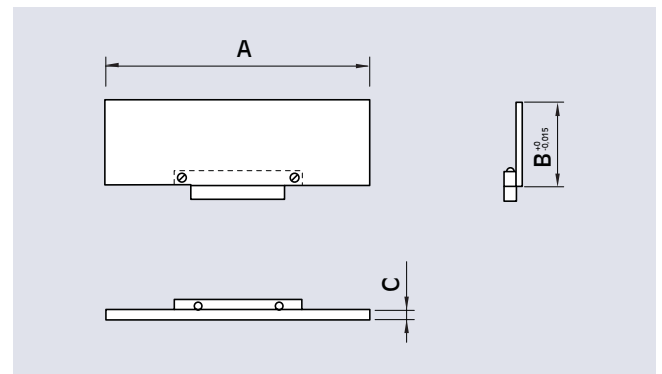
Set of 6 pairs of angular parallels



Cod.	for type	α mm					
		20°	25°	30°	35°	40°	45°
58 01 93 06	TC 110 x .../MC 125 x ...						
58 02 93 06	TC 150 x .../MC 150 x ...	20°	25°	30°	35°	40°	45°
58 03 93 06	TC 200 x .../MC 200 x ...	20°	25°	30°	35°	40°	45°



Pair of parallels



Cod.	B mm	A mm	C mm
58 01 35 10	10	106	3
58 01 35 12	12		
58 01 35 15	15		
58 01 35 20	20		
58 01 35 25	25		
58 01 35 28	28		
58 01 35 30	30		
58 01 35 33	33		
58 01 35 35	35		
58 01 35 37	37		

for type

TC 110 x .../MC 125 x ...

Cod.	B mm	A mm	C mm
58 02 35 12	12	146	3
58 02 35 15	15		
58 02 35 20	20		
58 02 35 25	25		
58 02 35 30	30		
58 02 35 35	35		
58 02 35 40	40		
58 02 35 43	43		
58 02 35 45	45		
58 02 35 47	47		

for type

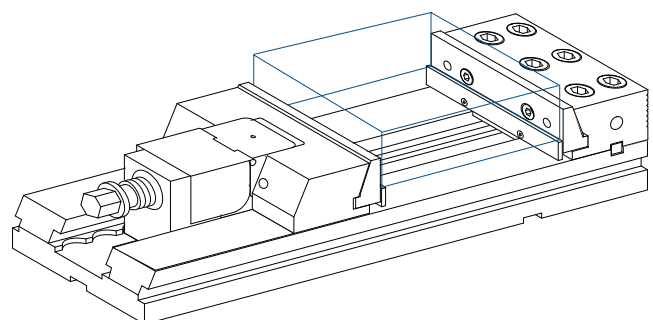
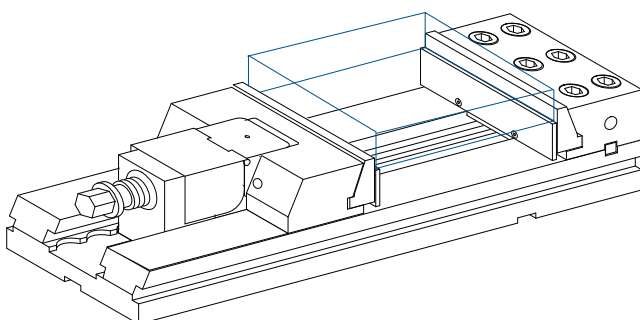
TC 150 x .../MC 150 x ...

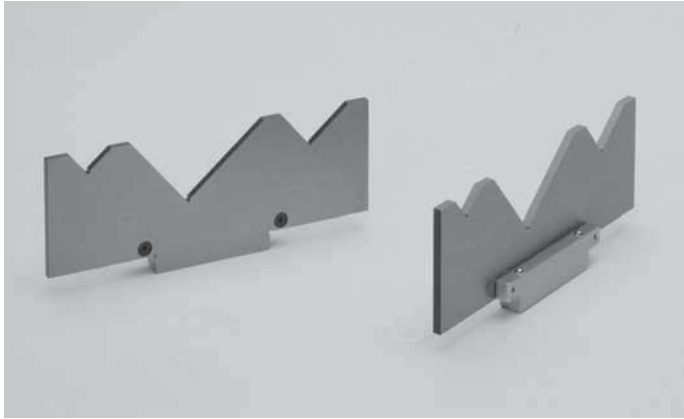
Cod.	B mm	A mm	C mm
58 03 35 20	20	196	4
58 03 35 25	25		
58 03 35 30	30		
58 03 35 35	35		
58 03 35 40	40		
58 03 35 45	45		
58 03 35 50	50		
58 03 35 55	55		
58 03 35 60	60		
58 03 35 65	65		

for type

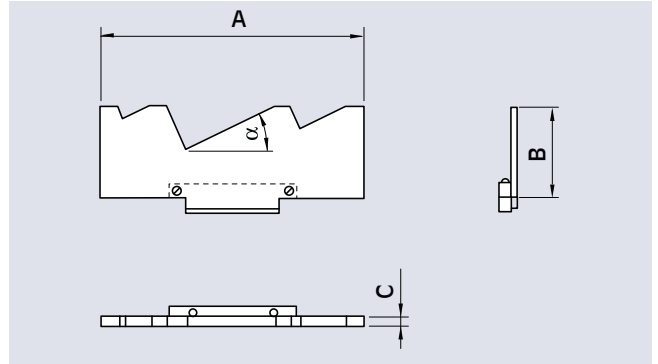
TC 200 x .../MC 200 x ...

Working examples:





Pair of angular parallels



Cod.	α mm	A mm	B mm	C mm
58 01 36 20	20	106	40	4
58 01 36 25	25			
58 01 36 30	30			
58 01 36 35	35			
58 01 36 40	40			
58 01 36 45	45			
58 02 36 20	20	146	50	4
58 02 36 25	25			
58 02 36 30	30			
58 02 36 35	35			
58 02 36 40	40			
58 02 36 45	45			

for type

TC 110 x .../MC 125 x ...

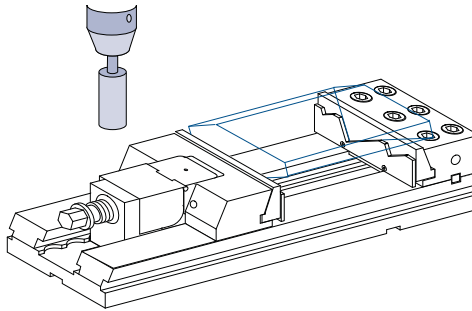
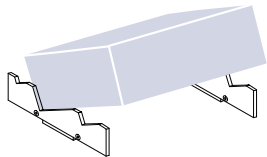
Cod.	α mm	A mm	B mm	C mm
58 03 36 20	20	196	70	4
58 03 36 25	25			
58 03 36 30	30			
58 03 36 35	35			
58 03 36 40	40			
58 03 36 45	45			

for type

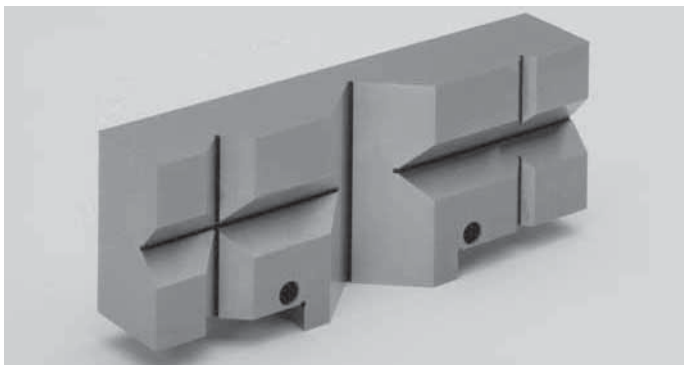
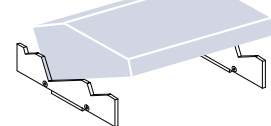
TC 200 x .../MC 200 x ...

Working examples:

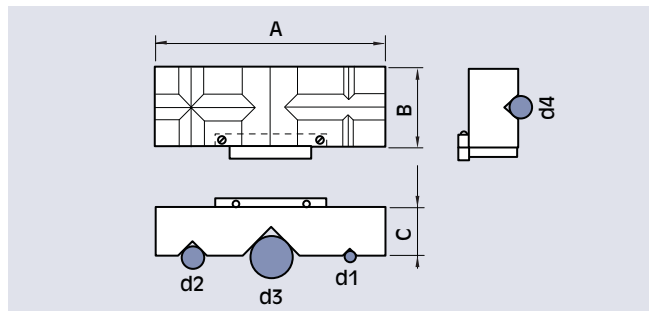
for machining



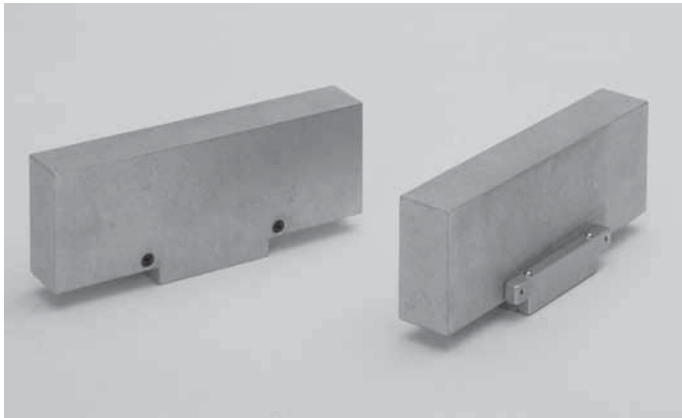
machined



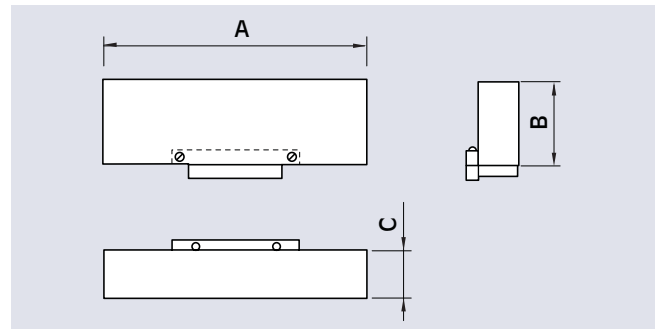
V jaw



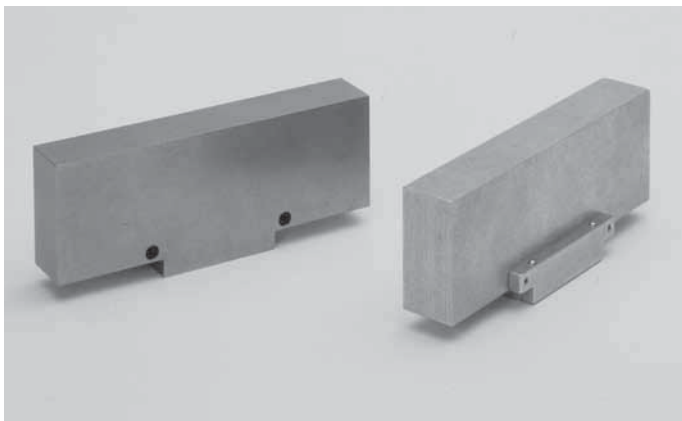
Codice-Nr.	per Modelli	A mm	B mm	C mm	D1		D2		D3		D4	
					MIN-mm	MAX-mm	MIN-mm	MAX-mm	MIN-mm	MAX-mm	MIN-mm	MAX-mm
58 01 94 09	TC 110 x .../MC 125 x ...	106	40	30	3	6,5	6,5	15	15	35	7	16
58 02 94 09	TC 150 x .../MC 150 x ...	146	50	30	3	6,5	6,5	15	15	35	7	16
58 03 94 09	TC 200 x .../MC 200 x ...	196	70	50	6	13	13	30	30	70	15	35



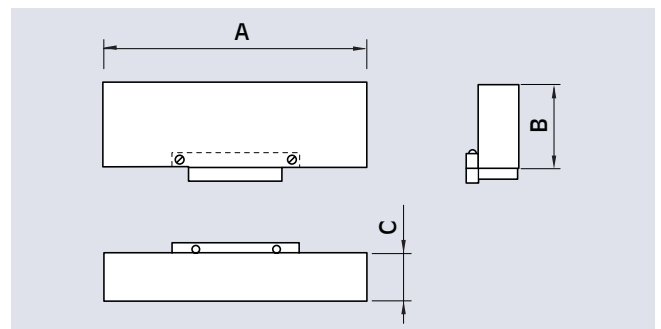
Pair of aluminium jaws



Cod.	for type	A mm	B mm	C mm
58 01 95 09	TC 110 /MC 125	106	40	19
58 02 95 09	TC 150 /MC 150	146	50	24
58 03 95 09	TC 200/MC 200	196	70	34



Pair of steel soft jaws



Cod.	for type	A mm	B mm	C mm
58 01 96 09	TC 110/MC 125	106	40	19
58 02 96 09	TC 150 /MC 150	146	50	24
58 03 96 09	TC 200/MC 200	196	70	34

Working examples:

