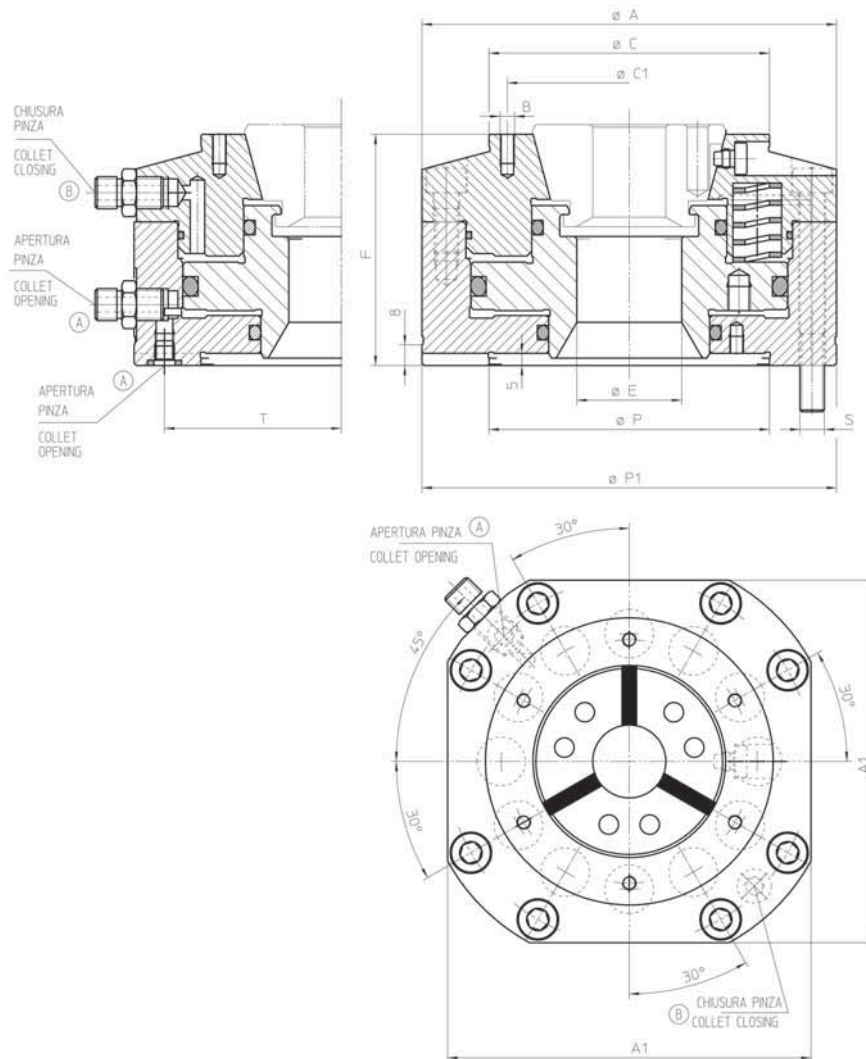
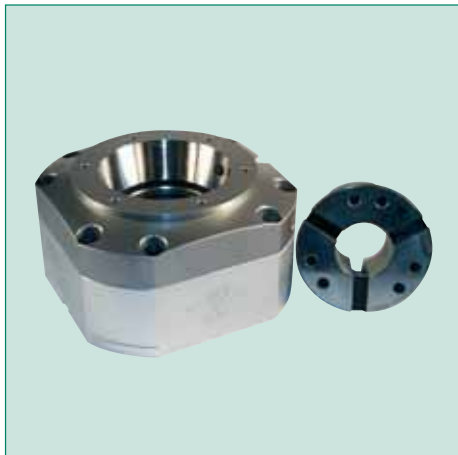


- Per lavorazioni in barra
For bar machining



Modello MPT - MPT model	SHH 42	SHH 65
Attacco naso mac. - Machine spindle	Z115 Z170	Z140 Z200
Codice - Code	77740142	77740165
A	170	200
A1	149	174
B	6xM6	6xM6
C	115	140
C1	100	120
E	43	67
F	95	100
P H7	115	140
P1 h7	170	200
R	150	180
S	4xM10	4xM10
T	72.5	85

Pressione max Max pressure	bar	26	25
Forza assiale max a metà corsa con molle Max axial stroke by half stroke with springs	kN	35	42
Forza di serraggio max Max clamping force	kN	80	100

Attrezzo di ricambio Changing unit	SHH 42	SHH 65
Manuale - Manual	01863500	01863599
Pneumatico - Pneumatic	01866500	01866599

DOTAZIONE: Mandrino e viti di fissaggio
(pinze da ordinare separatamente)

EQUIPMENT: Chuck and fixing screws
(collets to be ordered separately)

Soggetto a cambiamenti tecnici - Subject to technical changes

M2-PB

Base multipla
con 2 mandrini
Multiple fixture
with 2 chucks

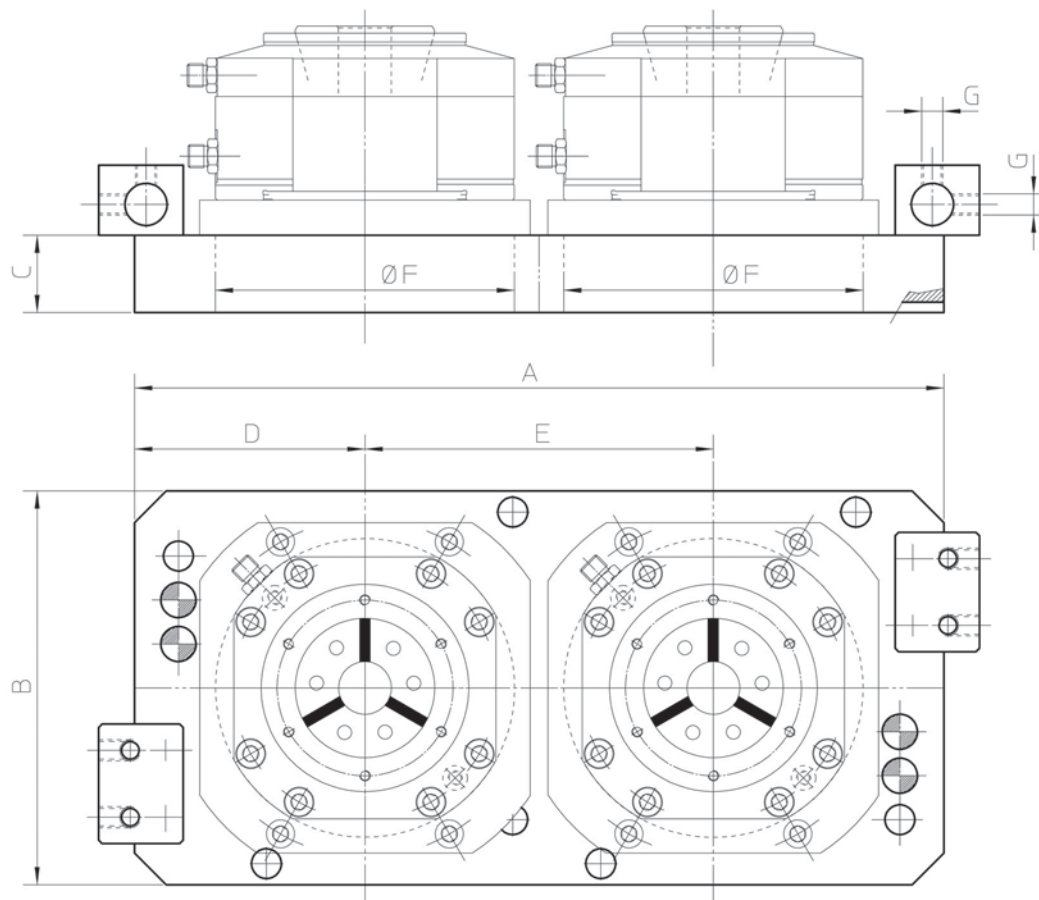
Basi multiple pneumatiche per centri di lavoro

Multiple pneumatic stationary chucks for machining centers

• Ø 130-315 mm
Ø 130-315 mm

• 2 o 3 griffe (PB-D/PB-M)
2 or 3 jaws (PB-D/PB-M)

• 3 griffe (PB-C)
3 jaws (PB-C)



Modello SMW Autoblock - SMW Autoblock type		M2-PB 130	M2-PB 165	M2-PB 210	M2-PB 250	M2-PB 315
A	mm	400	460	585	660	780
B	mm	198	224	274	324	374
C	mm	39	44	49	54	54
D	mm	107.5	131	155	175	205
E	mm	185	223	275	310	370
F	mm	135	170	215	260	315
G	pollici/inch	R 1/4*	R 1/4*	R 1/4*	R 1/4*	R 1/4*

Applicazioni possibili

Pinze espansibili: EM-A
EM-B

Portapinze a trazione: KSZ-AZ
KSZ-DZ
KSZ-NZ

Portapinze per barra: PPBE

Basi statiche: SHH
SHP

Possible applications

Expanding sleeves: EM-A
EM-B

Pull-to-close collet chucks: KSZ-AZ
KSZ-DZ
KSZ-NZ

Push-to-close collet chucks: PPBE

Stationary collet chucks: SHH
SHP