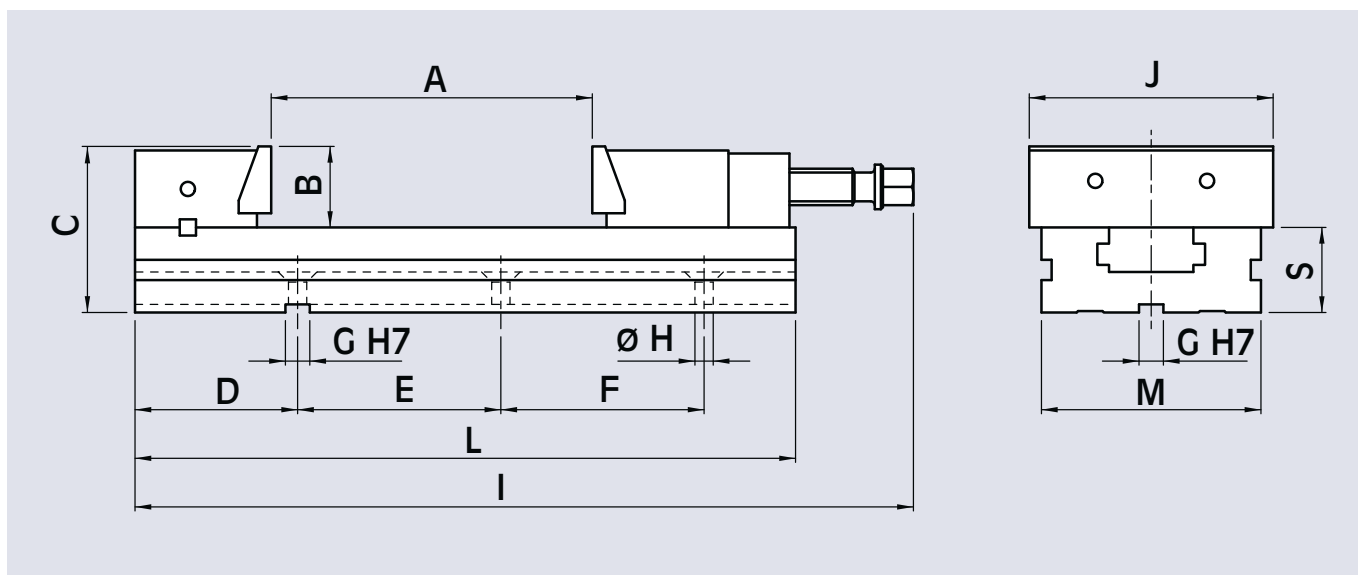
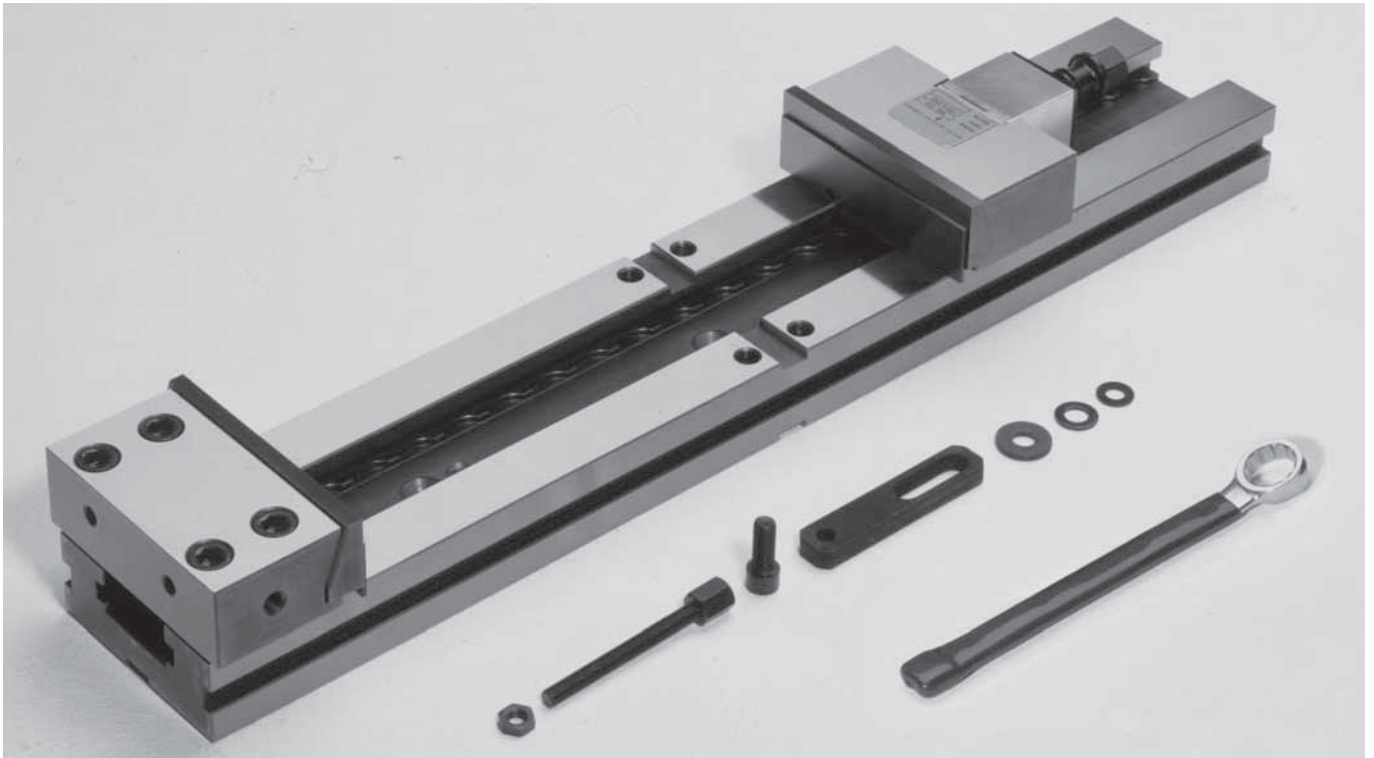


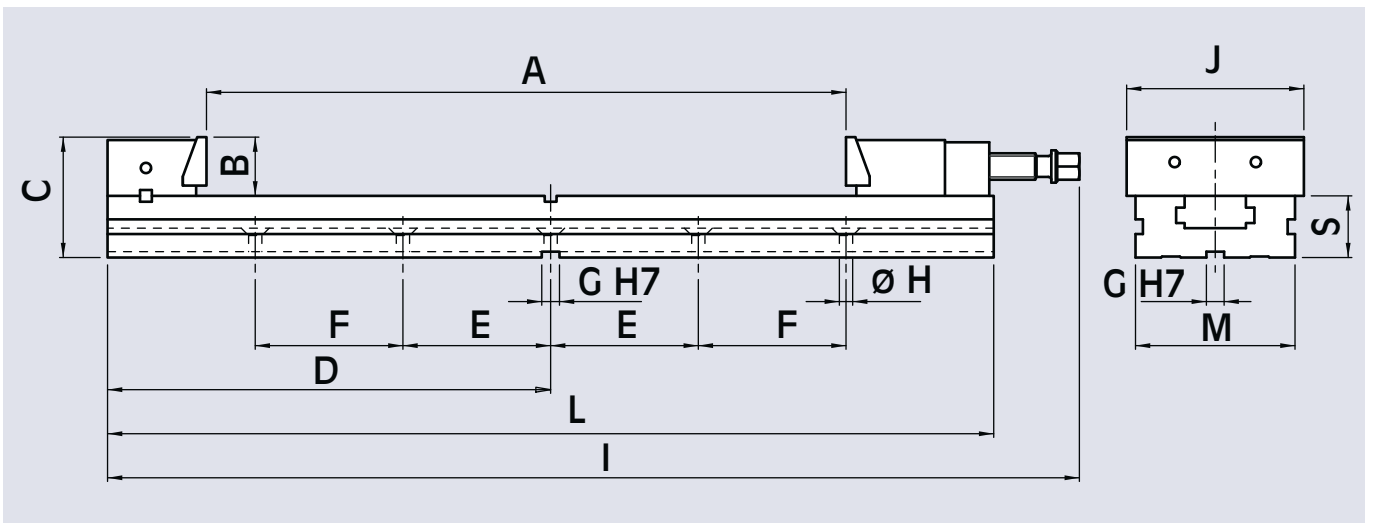
Clamping equipment MC complete with wrench , work stop, rigid slide way (floating slide-way at request for raw workpiece), pair of positioning keys, pair of CLAK parallels, cover for protection of the screw, cardboard box.



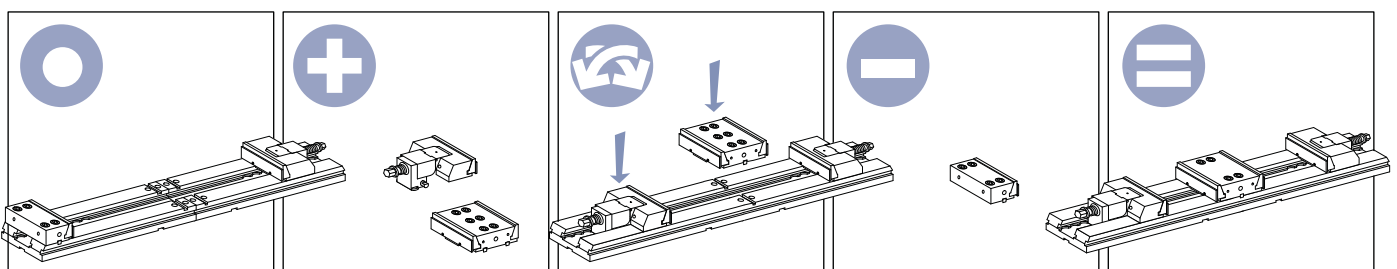
Cod.	type	A mm	B mm	C mm	D mm	E mm	F mm	G mm	H mm	I mm	J mm	L mm	M mm	S mm	Weight kg
77 58 06 01	MC 150 x 200	200	50	102	120	200	-	18	12,5	482	150	415	128	52	25,5
77 58 06 02	MC 150 x 250	250	50	102	120	100	100	18	12,5	532	150	465	128	52	27,5
77 58 06 03	MC 150 x 300	300	50	102	120	100	100	18	12,5	587	150	520	128	52	30,4
77 58 07 01	MC 200 x 300	300	70	136	150	150	150	18	12,5	656	200	570	168	66	66
77 58 07 02	MC 200 x 400	400	70	136	150	200	200	18	12,5	756	200	670	168	66	68

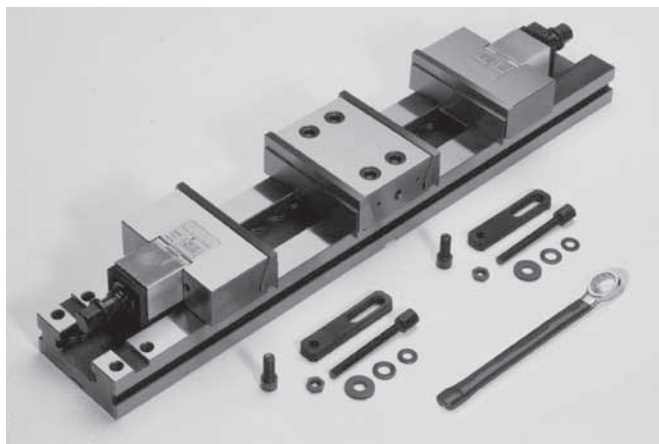


Clamping equipment **MC-XL** complete with wrench, work stop, rigid slide-way, (floating slide-way at request for raw workpiece), pair of positioning keys, pair of **CLAK** parallels, cover for protection of the screw, cardboard box.



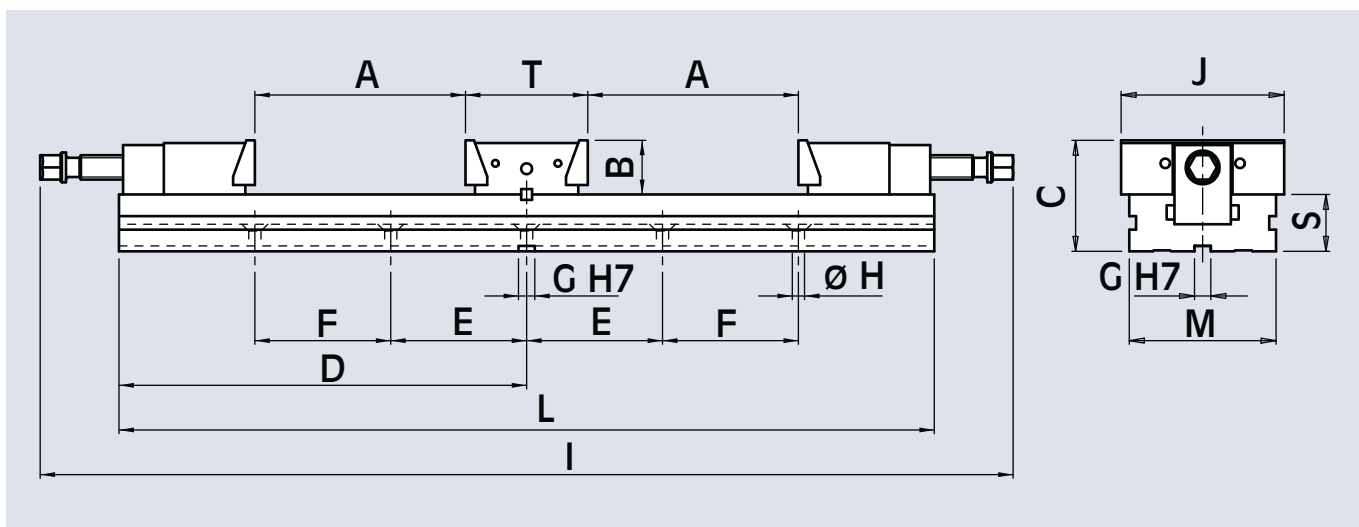
Cod.	for type	A mm	B mm	C mm	D mm	E mm	F mm	G mm	H mm	I mm	J mm	L mm	M mm	S mm	Weight kg
77 58 05 04	MC 125 x 425	425	40	82	300	100	100	12	9	656	125	600	108	42	21
77 58 06 04	MC 150 x 545	545	50	102	379	100	150	18	12,5	828	150	758	128	52	37
77 58 06 05	MC 150 x 655	655	50	102	439	100	200	18	12,5	938	150	878	128	52	41





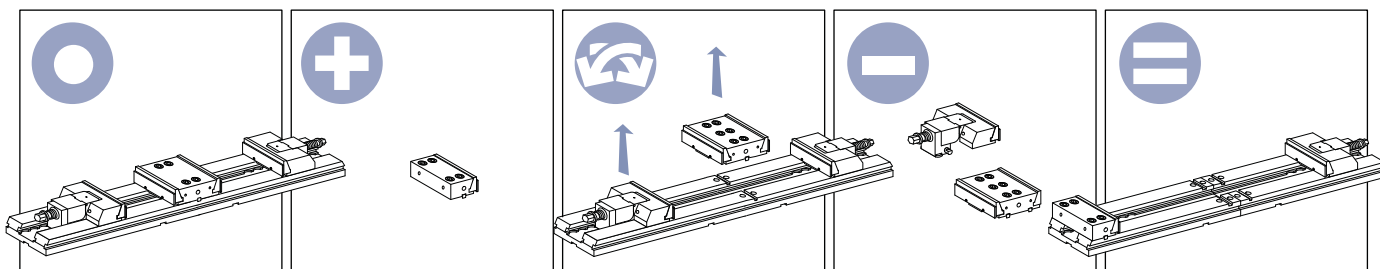
Double clamping equipment DCS-MC complete with:

- 1 wrench,
- 2 work stops,
- 2 rigid slide-ways, (floating slide-way at request for raw workpiece),
- 1 pair of positioning keys,
- 2 pair of CLAK parallels,
- 2 covers for protection of the screw,
- cardboard box.

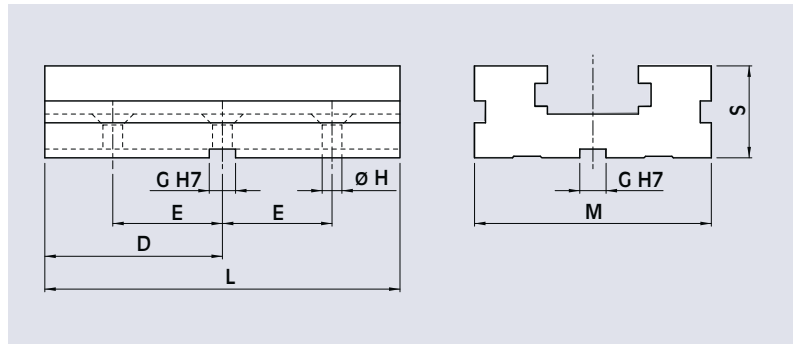
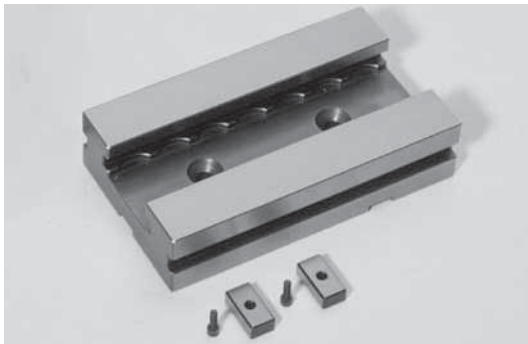


Cod.	for type	A mm	B mm	C mm	D mm	E mm	F mm	G mm	H mm	I mm	J mm	L mm	M mm	S mm	T mm	Weight kg
77 58 15 01	MC 125 x 150	150	40	82	300	100	100	12	9	712	125	600	108	42	90	24,5
77 58 16 01	MC 150 x 200	200	50	102	379	100	150	18	12,5	897	150	758	128	52	103	44
77 58 16 02	MC 150 x 250	250	50	102	439	100	200	18	12,5	997	150	878	128	52	103	48

The modularity of the system combined some other component offers many additional clamping solutions.

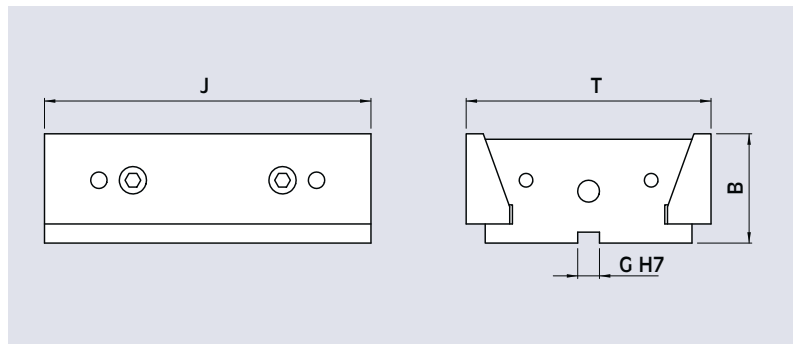


MC extension element with pair of positioning keys



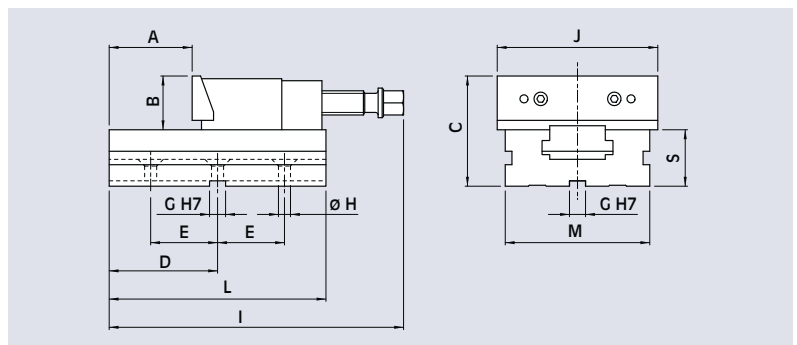
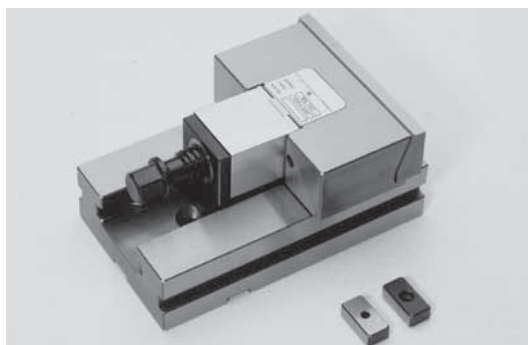
Cod.	for type	D mm	E mm	G mm	H mm	L mm	M mm	S mm	weight kg
58 06 17 00	MC 150 x ...	114	75	18	12,5	228	128	52	8
58 07 17 00	MC 200 x ...	140	100	18	12,5	280	168	66	18

MC double fixed support with jaw



Cod.	for type	B mm	G mm	J mm	T mm	weight kg
58 16 72 10	MC 150 x ...	50	12	150	103	5
58 17 72 10	MC 200 x ...	70	18	200	140	15

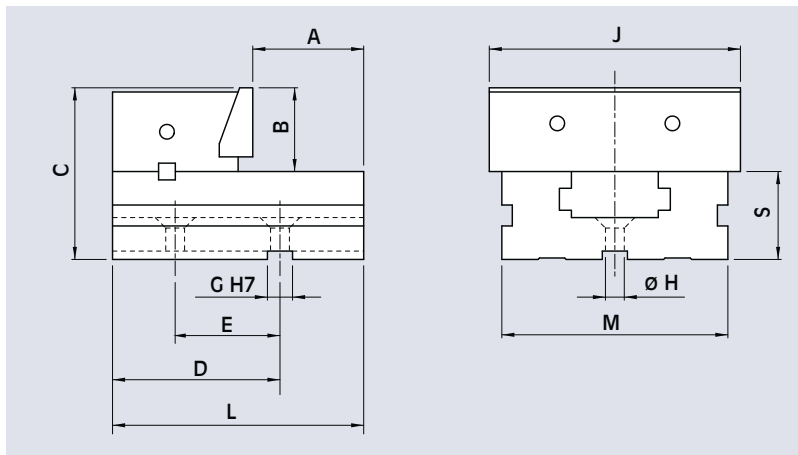
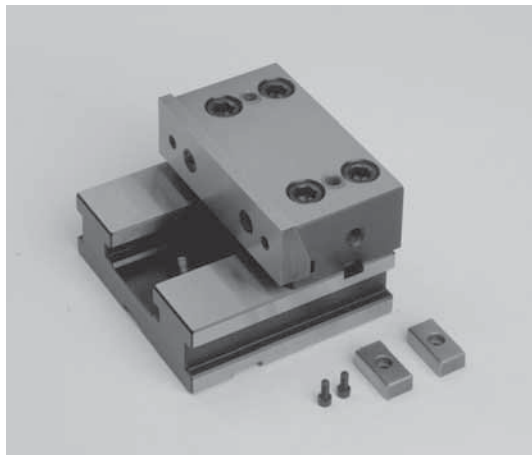
MC complete extension element with pair of positioning keys



Cod.	for type	A mm	B mm	C mm	D mm	E mm	G mm	H mm	I mm	J mm	L mm	M mm	S mm	weight kg
58 06 71 10	MC 150	100	50	102	114	75	18	12,5	295	150	228	128	52	14,5
58 07 71 10	MC 200	120	70	136	140	100	18	12,5	370	200	280	168	66	34,5

MC base with fixed support with jaw

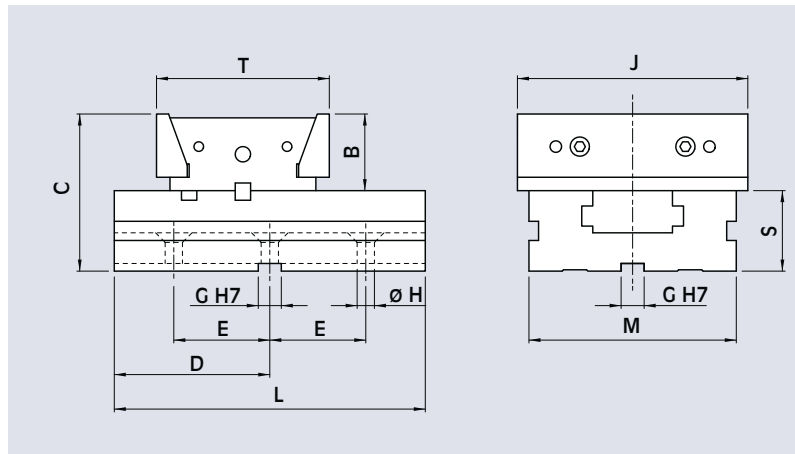
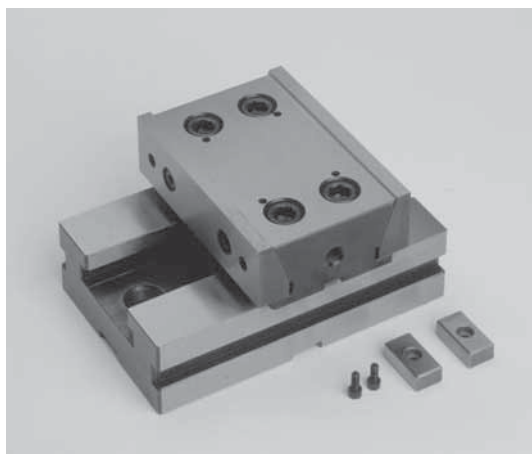
complete with pair of positioning keys



Cod.	for type	A mm	B mm	C mm	D mm	E mm	G mm	H mm	J mm	L mm	M mm	S mm	weight kg
58 06 70 10	MC 150	85	50	102	120	75	18	12,5	150	170	128	52	9,5
58 07 70 10	MC 200	96	70	136	150	100	18	12,5	200	205	168	66	22

MC base with double fixed support with jaw

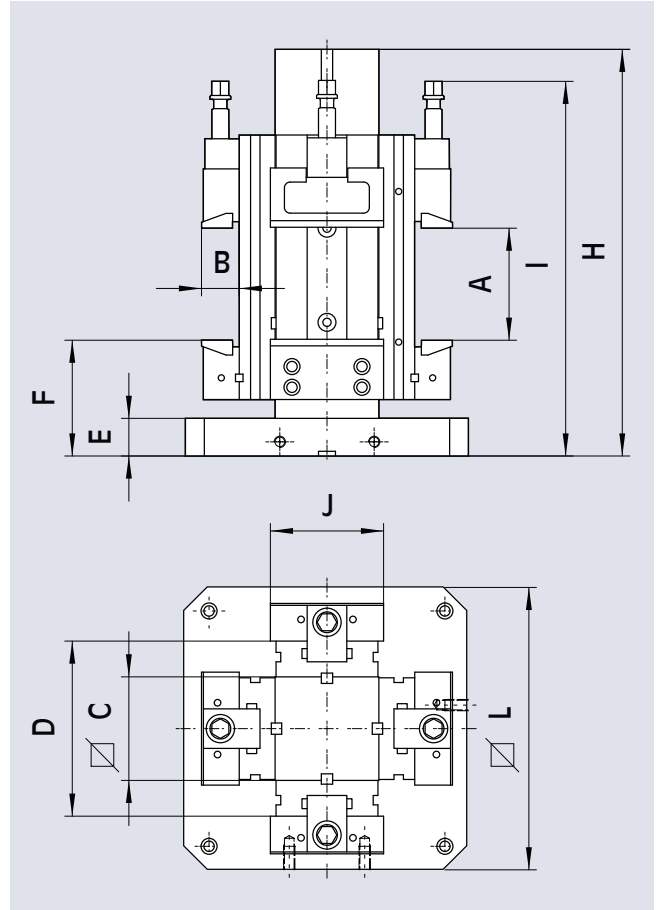
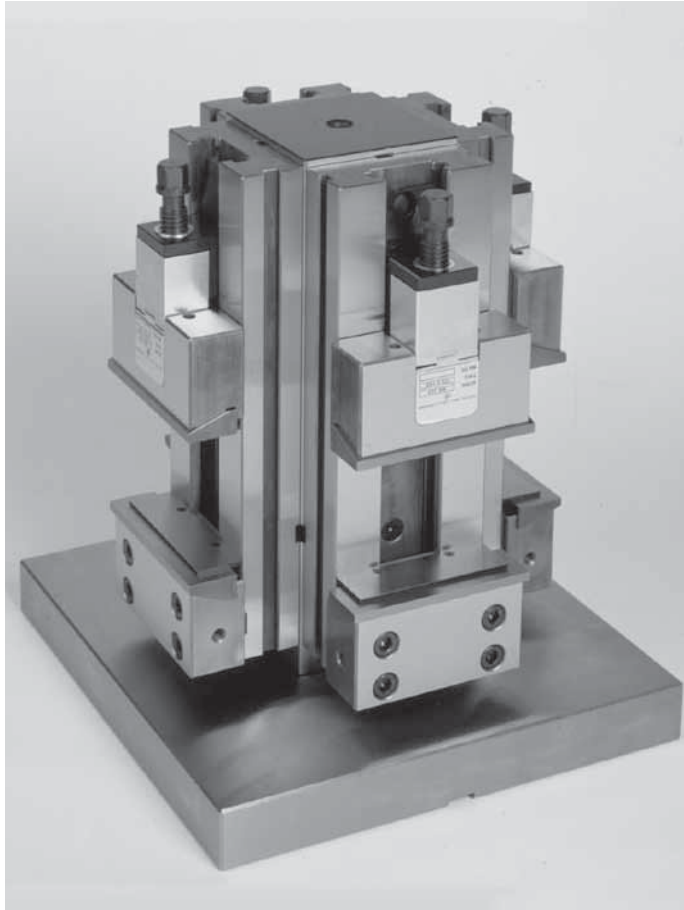
complete with pair of positioning keys



Cod.	for type	B mm	C mm	D mm	E mm	G mm	H mm	J mm	L mm	M mm	S mm	T mm	weight kg
58 16 70 10	MC 150	50	102	100	75	18	12,5	150	200	128	52	103	13
58 17 70 10	MC 200	70	136	125	100	18	12,5	200	250	168	66	140	40

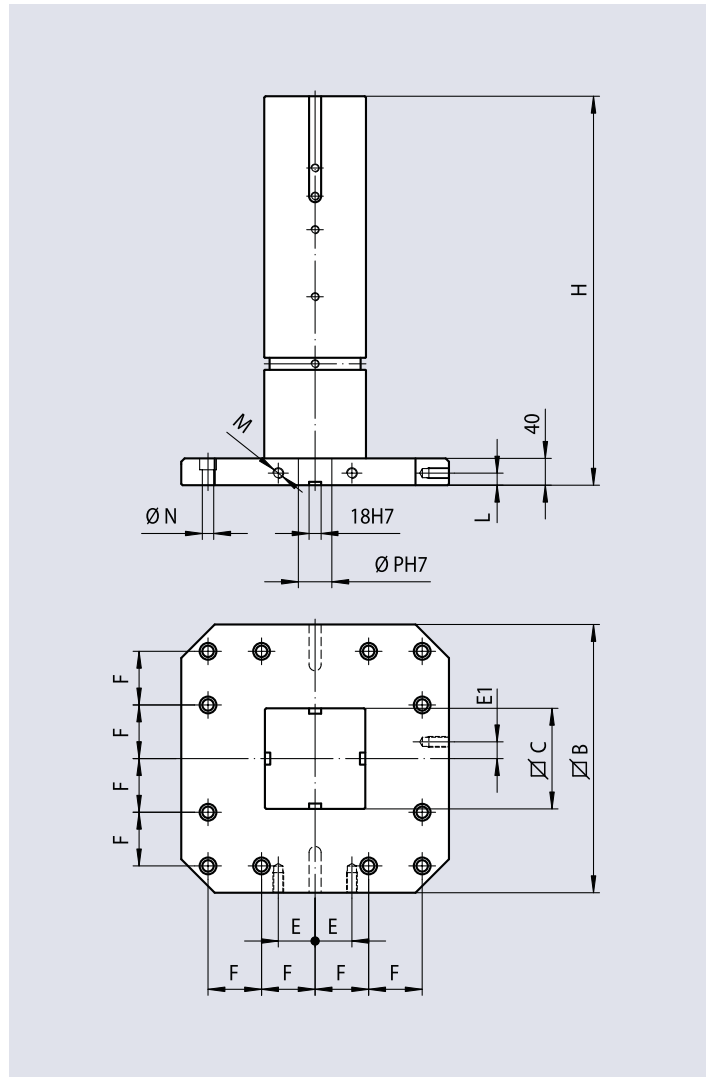
Vertical clamping system complete with:
 4 clamping equipment MC
 1 column
 1 base for vertical system MC
 4 pair of CLAK parallels
 4 covers for protection for the screws

4 rigid slide-ways (floating slide-ways on request for raw work pieces)
 4 work stops
 4 wrenches
 eye bolt for lifting,
 wooden packing case



Cod.	for type	A mm	B mm	C mm	D mm	E mm	F mm	H mm	I mm	J mm	L mm	weight kg
77 58 26 21	MC 150 x 200	200	50	150	254	40	146	580	545	150	400	249
77 58 26 22	MC 150 x 250	250	50	150	254	40	146	580	595	150	400	257
77 58 26 23	MC 150 x 300	300	50	150	254	40	146	580	650	150	400	267
77 58 26 31	MC 150 x 200	200	50	150	254	40	146	580	545	150	500	276
77 58 26 32	MC 150 x 250	250	50	150	254	40	146	580	595	150	500	284
77 58 26 33	MC 150 x 300		50	150	254	40	146	580	650	150	500	294
77 58 27 31	MC 200 x 300	300	70	200	332	40	159	661	711	200	500	535

Working examples see pag. 2.16



Cod.	for type	B mm	C mm	E mm	E1 mm	F mm	H mm	L mm	M mm	N mm	P mm	weight kg
58 22 80 20	MC 150	400	150	55	25	80	580	18	16	17	50	142
58 22 80 30	MC 150	500	150	75	25	100	580	18	16	17	50	169
58 23 80 30	MC 200	500	200	75	25	100	661	18	16	17	50	266

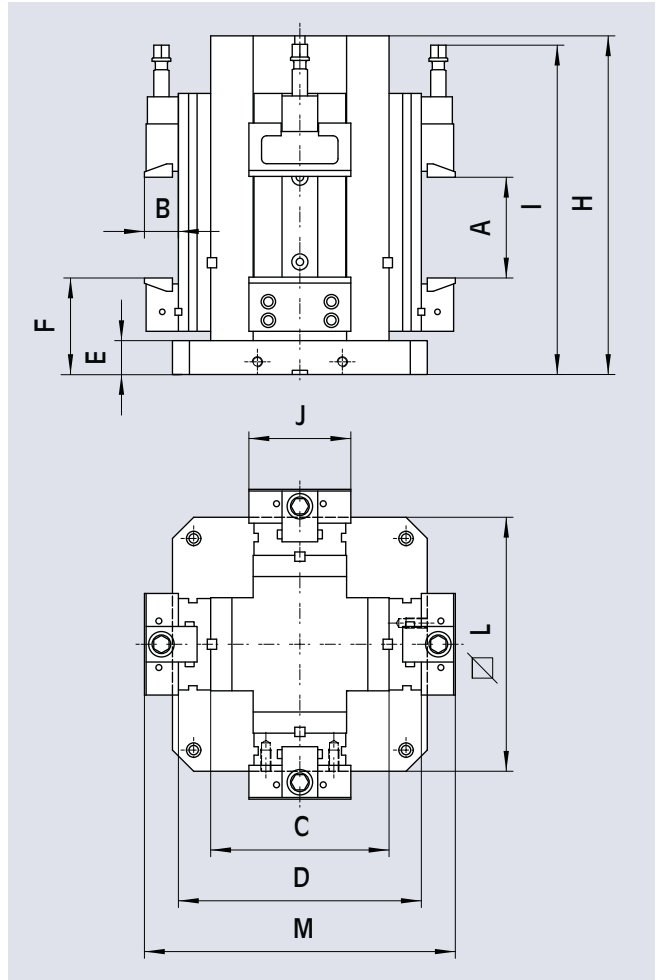
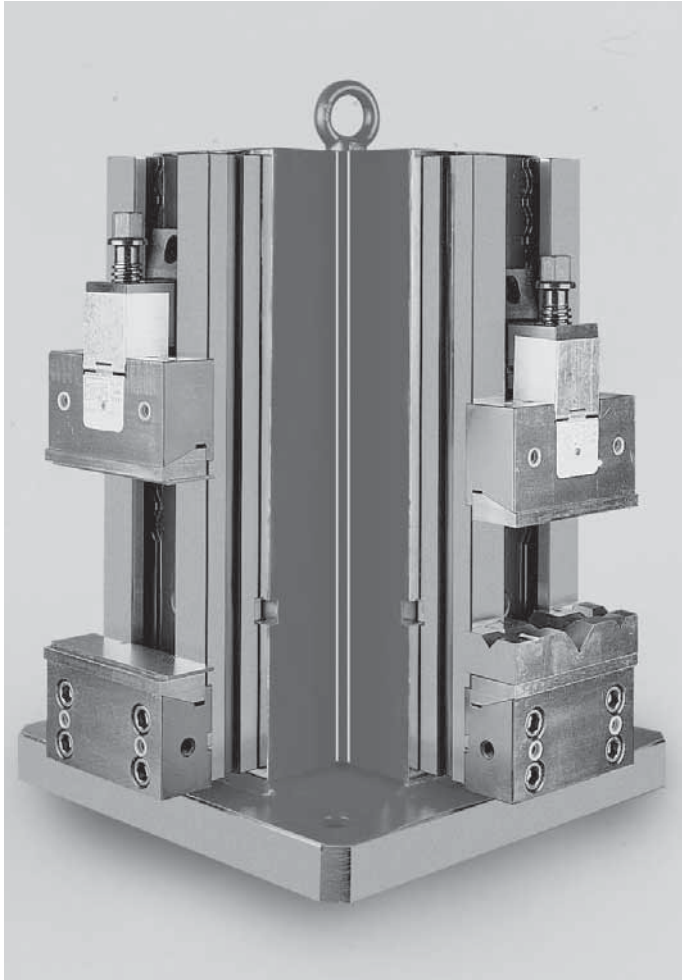


Insert for vertical use

Cod.	for type
58 21 33 00	MC 125
58 22 33 00	MC 150
58 23 33 00	MC 200

Cross Vertical clamping system complete with:
 4 clamping equipment MC
 1 cross cube
 4 pair of CLAK parallels
 4 covers for protection for the screws

4 guided slide-ways (floating slide-ways on request for raw workpieces)
 4 work stops
 4 wrenches
 eye bolt for lifting
 wooden packing case



Cod.	for type	A mm	B mm	C mm	D mm	E mm	F mm	H mm	I mm	J mm	L mm	M mm	weight kg
77 58 56 21	MC 150 x 200	200	50	300	404	40	140	580	540	150	400	504	314
77 58 56 22	MC 150 x 250	250	50	300	404	40	140	580	590	150	400	504	322
77 58 56 23	MC 150 x 300	300	50	300	404	40	140	580	647	150	400	504	332
77 58 56 31	MC 150 x 200	200	50	300	404	40	140	580	540	150	500	504	342
77 58 56 32	MC 150 x 250	250	50	300	404	40	140	580	590	150	500	504	350
77 58 56 33	MC 150 x 300	300	50	300	404	40	140	580	547	150	500	504	360
77 58 57 41	MC 200 x 300	300	70	350	482	45	168	670	720	200	630	622	627

Working examples see pag. 2.18

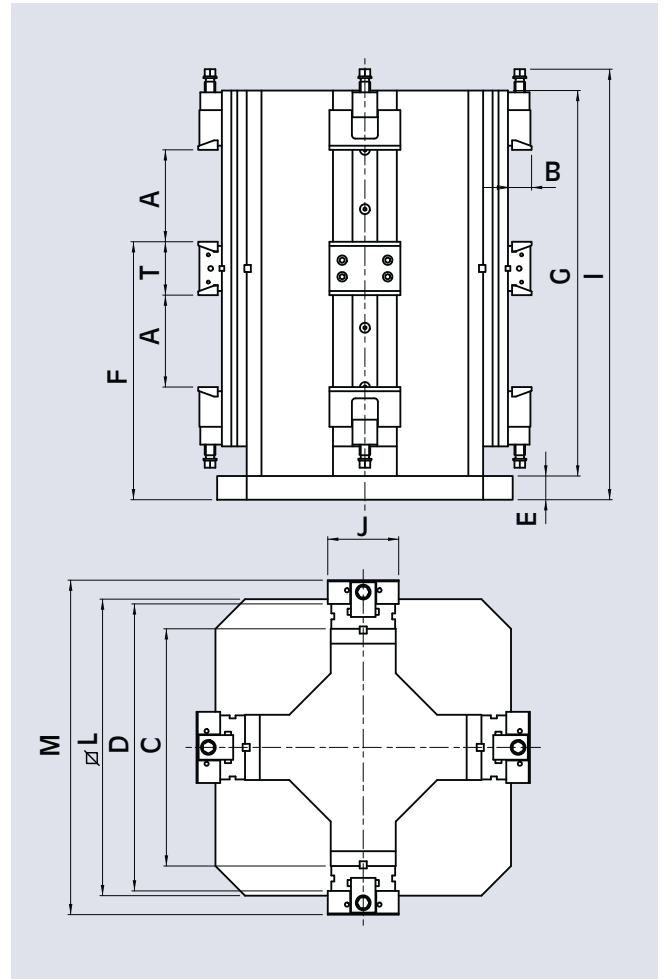
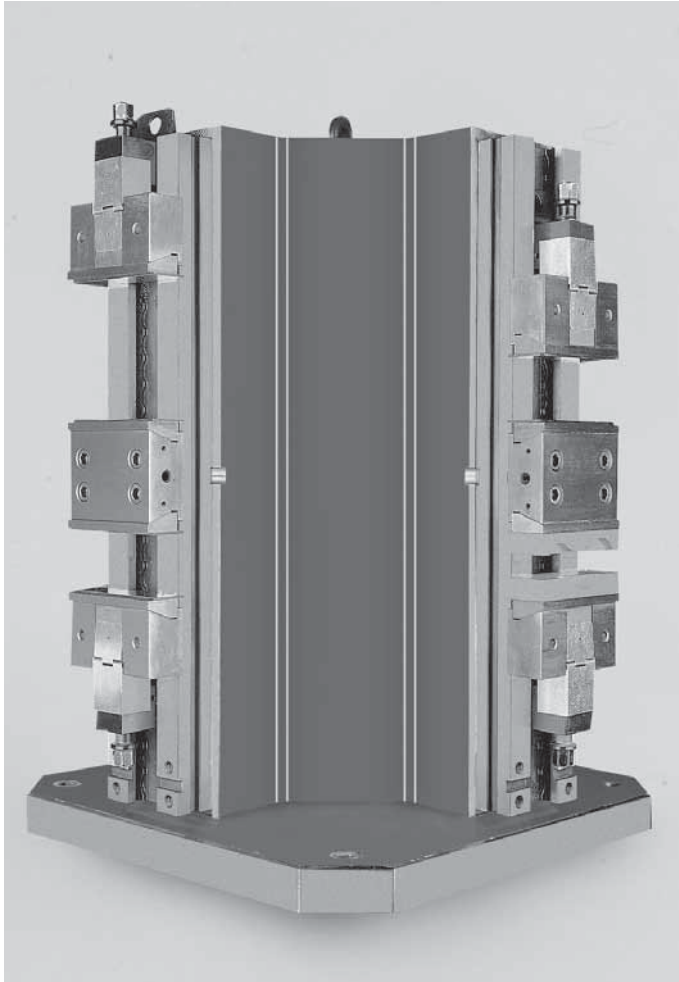
Modular Vertical double Clamping Systems

DVCS-MC

3.1

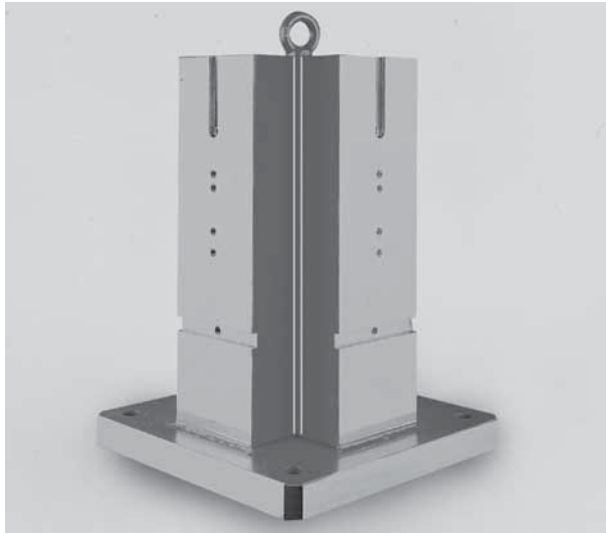
Vertical clamping system complete with:
 4 double clamping equipment MC
 1 cross cube XL
 8 pair of CLAK parallels
 8 covers for protection for the screws

8 guided slide-ways (floating slide-ways on request for raw workpieces)
 8 work stops
 8 wrenches
 eye bolt for lifting
 wooden packing case

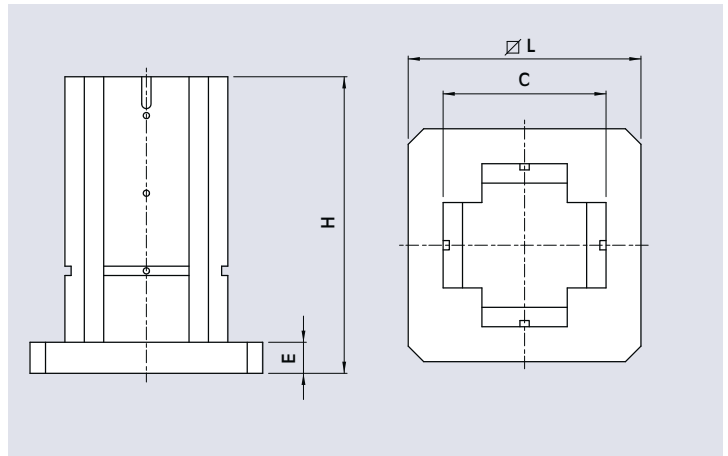


Cod.	for type	A mm	B mm	C mm	D mm	E mm	F mm	G mm	I mm	J mm	L mm	M mm	T mm	Weight kg
77 58 65 01	DVCS -MC 125 x 150	150	40	400	484	40	435	650	725	125	500	564	90	362
77 58 66 01	DVCS -MC 150 x 200	200	50	550	654	45	515	795	890	150	630	754	103	680

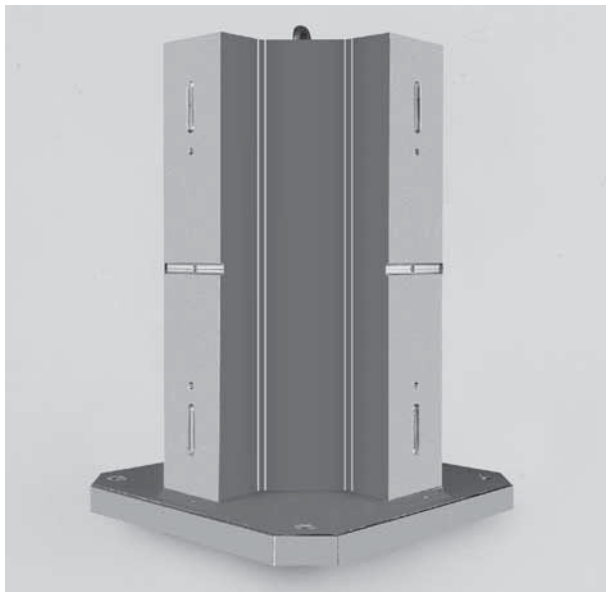
Working examples see pag. 2.19



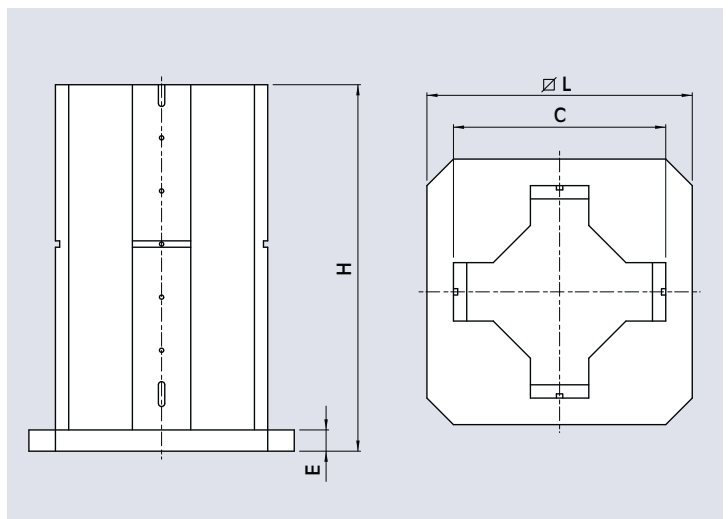
Cross cube for VCS-MC



Cod.	for type	C mm	E mm	H mm	L mm	Weight kg
58 51 80 10	MC 125	210	40	382	300	75
58 52 80 20	MC 150	300	40	580	400	212
58 52 80 30	MC 150	300	40	580	500	240
58 53 80 40	MC 200	350	45	670	630	363



Cross cube for DVCS-MC



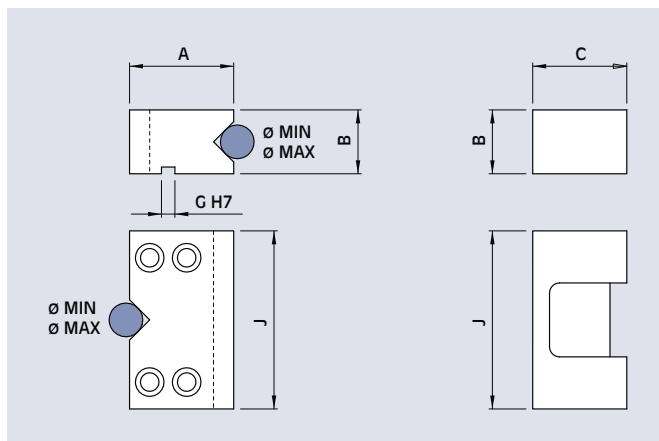
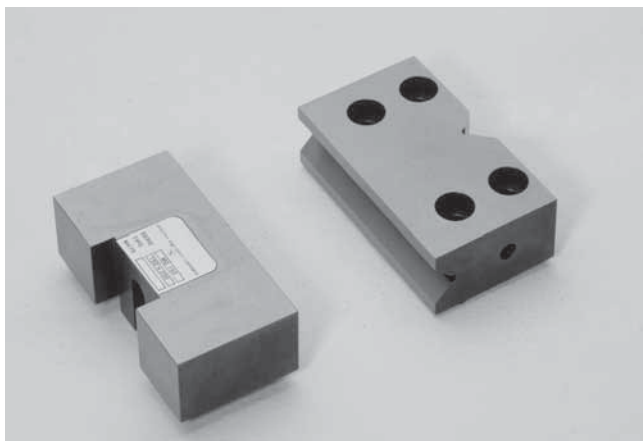
Cod.	for type	C mm	E mm	H mm	L mm	Weight kg
58 61 80 00	DVCS-MC 125 x ...	400	40	690	500	266
58 62 80 00	DVCS-MC 150 x ...	550	45	840	630	475



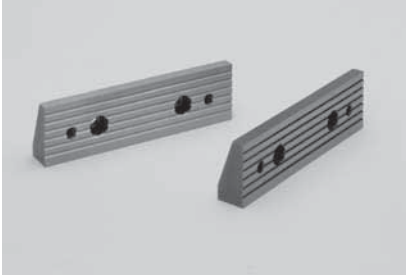
Insert for vertical use

Cod.	type
58 21 33 00	VCS - MC 125
58 22 33 00	VCS - MC 150
58 23 33 00	VCS - MC 200

Pair of V jaw



Cod.	for type	A mm	B mm	C mm	G mm	J mm	Ø MIN mm	Ø MAX mm	weight kg
58 06 40 00	MC 150	85	48	75	12	150	15	38	8,2
58 07 40 00	MC 200	109	68	96	18	200	20	48	20



Pair of grooved jaws

Cod.	for type	
58 05 44 09	MC 125 x ...	
58 06 44 09	MC 150 x ...	
58 07 44 09	MC 200 x ...	



Insert for vertical use

(MVS, VCS, DVCS)

Cod.	for type	
58 21 33 00	MC 125	
58 22 33 00	MC 150	
58 23 33 00	MC 200	



Torque wrench

Cod.	for type	
51 50 10 01	MC 125 x ...	
51 50 10 02	MC 150 x ...	
51 50 10 03	MC 200 x ...	



Air/oil block complete

with cylinder and tang

Cod.	for type	
58 01 75 00	MC 125 x ...	
58 02 75 00	MC 150 x ...	
58 03 75 00	MC 200 x ...	



Air/oil foot pump

with joining pipe cm. 180 (71") and complete block for air/oil application

Cod.	for type	
77 58 01 51	MC 125 x ...	
77 58 02 51	MC 150 x ...	
77 58 03 51	MC 200 x ...	



Air/oil foot pump

cod.	for type	
71 66 03 05	MC 125 x ...	
71 66 03 05	MC 150 x ...	
71 66 03 05	MC 200 x ...	



Air/oil manual pump

Cod.	for type	
71 66 03 15	MC 125 x ...	
71 66 03 15	MC 150 x ...	
71 66 03 15	MC 200 x ...	



Pressure - gauge

Cod.	for type	
51 43 12 51	MC 125 x ...	
51 43 12 51	MC 150 x ...	
51 43 12 51	MC 200 x ...	



Joining pipe M. 1,80 (71')

cod.	for type	
71 70 87 13	MC 125 x ...	
71 70 87 13	MC 150 x ...	
71 70 87 13	MC 200 x ...	



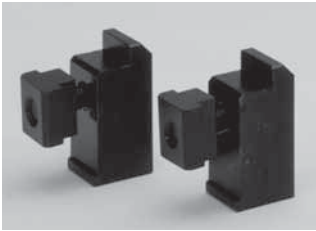
Joining pipe M. 3 (118'')

Cod.	for type	
71 70 87 14	MC 125 x ...	
71 70 87 14	MC 150 x ...	
71 70 87 14	MC 200 x ...	

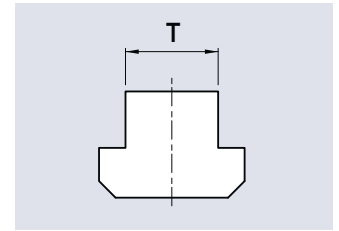


Joining pipe M. 6 (236'')

cod.	for type	
71 70 87 15	MC 125 x ...	
71 70 87 15	MC 150 x ...	
71 70 87 15	MC 200 x ...	



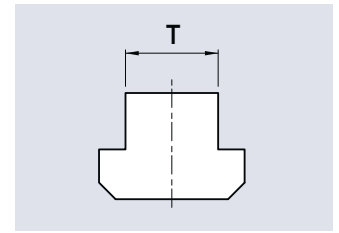
Pair of clamps complete
with screw and T nuts



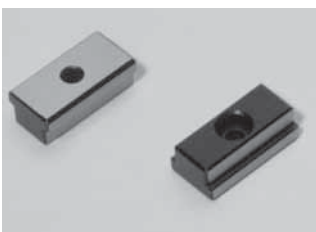
Code for T-slots						for type
mm 12	mm 14	mm 16	mm 18	mm 20	mm 22	
58 01 27 92	58 01 27 93	58 01 27 94	58 01 27 95	58 01 27 96	58 01 27 97	MC 125 x ...
58 02 27 92	58 02 27 93	58 02 27 94	58 02 27 95	58 02 27 96	58 02 27 97	MC 150 x ...
58 03 27 92	58 03 27 93	58 03 27 94	58 03 27 95	58 03 27 96	58 03 27 97	MC 200 x ...



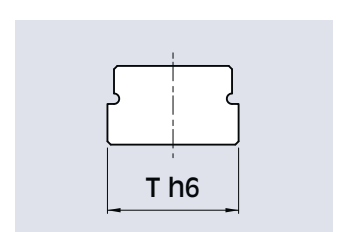
Pair of nuts complete
with screws at 45°



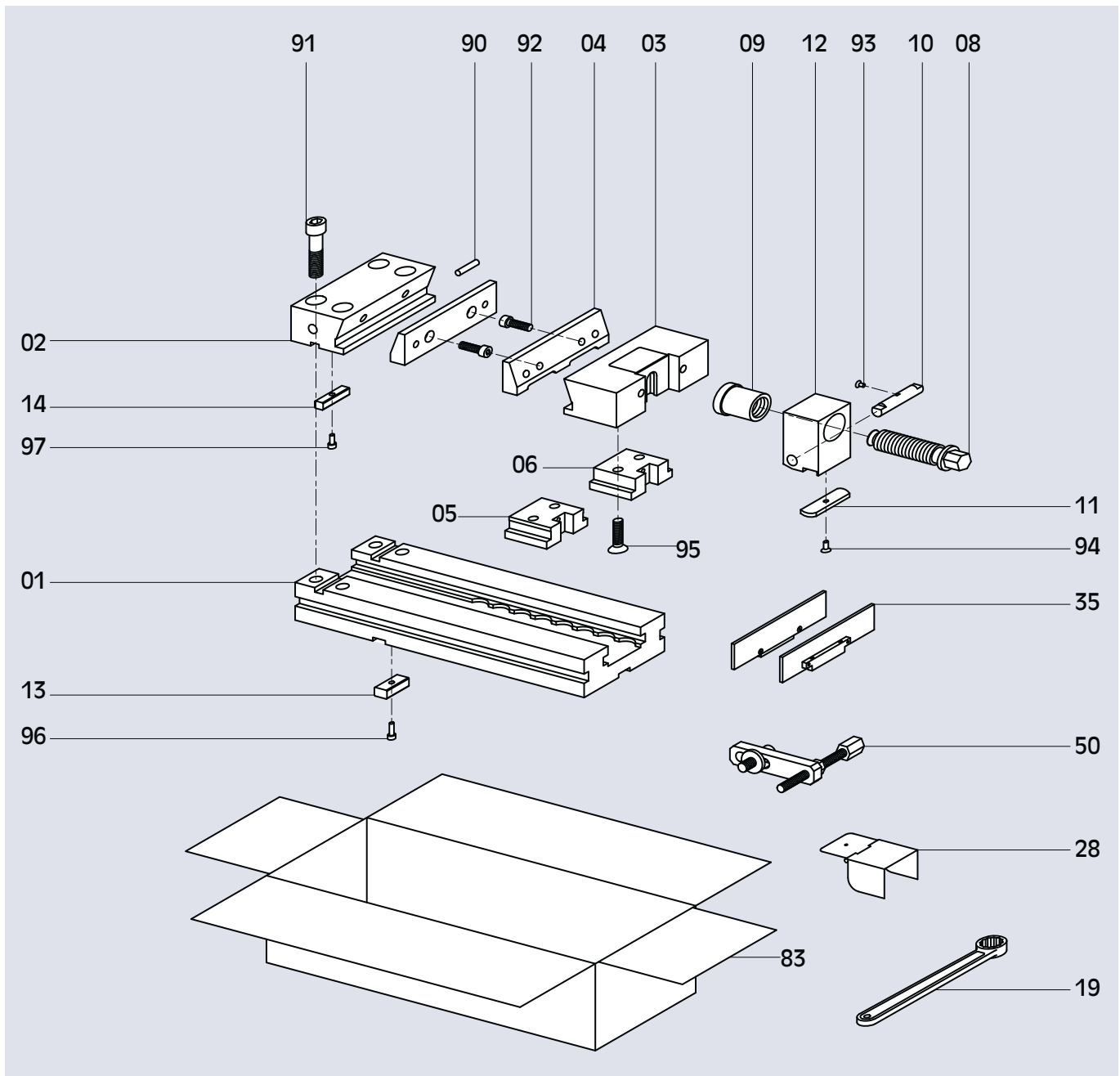
Code for T-slots						for type
mm 12	mm 14	mm 16	mm 18	mm 20	mm 22	
58 01 25 92	58 01 25 93	58 01 25 94	58 01 25 95	58 01 25 96	58 01 25 97	MC 125 x ...
58 02 25 92	58 02 25 93	58 02 25 94	58 02 25 95	58 02 25 96	58 02 25 97	MC 150 x ...
58 03 25 92	58 03 25 93	58 03 25 94	58 03 25 95	58 03 25 96	58 03 25 97	MC 200 x ...



Pair of positioning key
with special dimensions

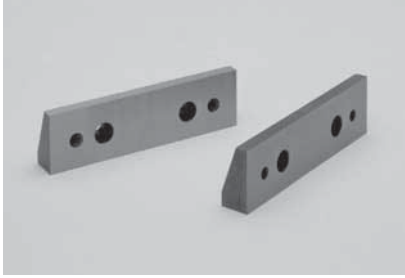


Code for T-slots						for type
mm 12	mm 14	mm 16	mm 18	mm 20	mm 22	
-	58 01 13 93	58 01 13 94	58 01 13 95	58 01 13 96	58 01 13 97	MC 125 x ...
58 02 13 92	58 02 13 93	58 02 13 94	-	58 02 13 96	58 02 13 97	MC 150 x ...
58 02 13 92	58 02 13 93	58 02 13 94	-	58 02 13 96	58 02 13 97	MC 200 x ...



Description

01.....	Base	12.....	Block for clamping screw	91.....	Screw TCEI
02.....	Fixed support	13.....	Positioning key	92.....	Screw TCEI
03.....	Movable support	14.....	Key for support	93.....	Screw TPS
04.....	Jaw	19.....	Wrench	94.....	Screw TPS
05.....	Floating slide-way	28.....	Cover for protection of the screw	95.....	Screw TPS
06.....	Rigid slide-way	38.....	Pair of CLAK parallels	96.....	Screw TCEI
08.....	Clamping screw	50.....	Work stop	97.....	Screw TCEI
09.....	Bronze bushing	83.....	Cardboard box		
10.....	Contrast pin	90.....	Rubber pad		
11.....	Positioning plate				



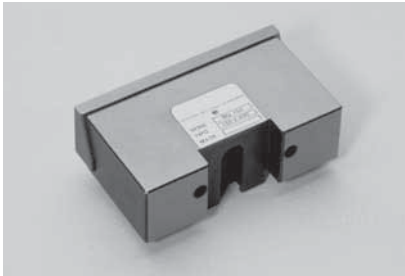
Pair of smooth jaws

Cod.	for type	
58 05 04 09	MC 125 x ...	
58 06 04 09	MC 150 x ...	
58 07 04 09	MC 200 x ...	



Fixed support with jaw

Cod.	for type	
58 05 72 10	MC 125 x ...	
58 06 72 10	MC 150 x ...	
58 07 72 10	MC 200 x ...	



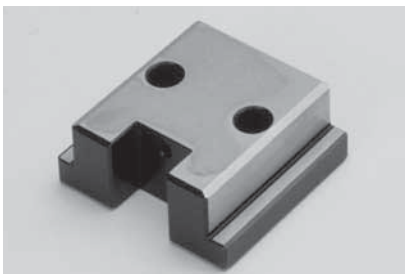
Movable support with jaw

Cod.	for type	
58 05 73 10	MC 125x ...	
58 06 73 10	MC 150 x ...	
58 07 73 10	MC 200 x ...	



Floating slide-way

Cod.	for type	
58 01 05 00	MC 125 x ...	
58 02 05 00	MC 150 x ...	
58 07 05 00	MC 200 x ...	



Rigid slide-way

Cod.	for type	
58 01 06 00	MC 125 x ...	
58 02 06 00	MC 150 x ...	
58 07 06 00	MC 200 x ...	



Pair of keys for fixed suport

Cod.	for type
58 01 14 09	MC 125 x ...
58 02 14 09	MC 150 x ...
58 02 13 95	MC 200 x ...



Wrench

Cod.	for type
58 01 19 00	MC 125 x ...
58 02 19 00	MC 150 x ...
58 03 19 00	MC 200 x ...



Complete clamping block (old type)

Cod.	for type
58 01 74 10	MC 125 x ...
58 02 74 10	MC 150 x ...
58 03 74 10	MC 200 x ...



Complete clamping block (new type)

Cod.	for type
58 02 74 11	MC 150 x ...
58 03 74 11	MC 200 x ...



Block for clamping screw (old type)

Cod.	for type
58 01 12 10	MC 125 x ...
58 02 12 10	MC 150 x ...
58 03 12 10	MC 200 x ...



Block for clamping screw (new type)

Cod.	for type
58 02 12 12	MC 150 x ...
58 03 12 12	MC 200 x ...



Clamping screw (old type)

Cod.	for type
58 01 08 10	MC 125 x ...
58 02 08 10	MC 150 x ...
58 03 08 10	MC 200 x ...



Clamping screw (new type)

Cod.	for type
58 02 08 12	MC 150 x ...
58 03 08 12	MC 200 x ...



Bronze bushing (old type)

Cod.	for type
58 01 09 00	MC 125 x ...
58 02 09 00	MC 150 x ...
58 03 09 00	MC 200 x ...



Contrast pin (old type)

Cod.	for type
58 01 10 00	MC 125 x ...
58 02 10 00	MC 150 x ...
58 03 10 00	MC 200 x ...



Contrast pin (new type)

Cod.	for type
58 02 10 01	MC 150 x ...
58 03 10 01	MC 200 x ...



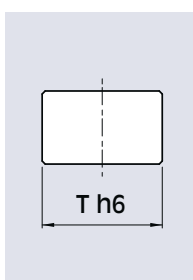
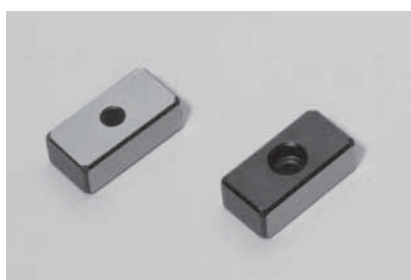
Positioning plate (old type)

Cod.	for type
58 01 11 10	MC 125 x ...
58 02 11 10	MC 150 x ...
58 03 11 10	MC 200 x ...



Positioning plate (new type)

Cod.	for type	
58 02 11 11	MC 150 x ...	
58 03 11 11	MC 200 x ...	



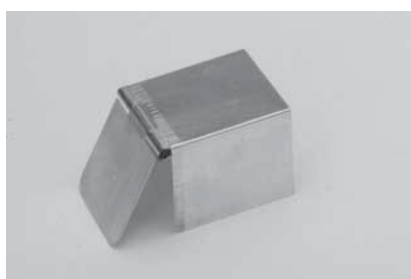
Pair of standard positioning keys

Cod.	for type	T h6 mm
58 01 13 92	MC 125 x ...	12
58 02 13 95	MC 150 x ...	18
58 02 13 95	MC 200 x ...	18



Work stop

Cod.	for type	
58 01 50 00	MC 125 x ...	
58 02 50 00	MC 150 x ...	
58 03 50 00	MC 200 x ...	



Cover for protection of the screw

Cod.	for type	
58 01 28 10	MC 125 x ...	
58 02 28 10	MC 150 x ...	
58 03 28 10	MC 200 x ...	



Block for cylinder

Cod.	for type	
58 01 12 20	MC 125 x ...	
58 02 12 20	MC 150 x ...	
58 03 12 20	MC 200 x ...	



Tang for cylinder

Cod.	for type	
58 02 16 00	MC 150 x ...	
58 03 16 00	MC 200 x ...	



Can of oil

Cod.	for type	
10 72 99 40	MC 150 x ...	
10 72 99 40	MC 200 x ...	
