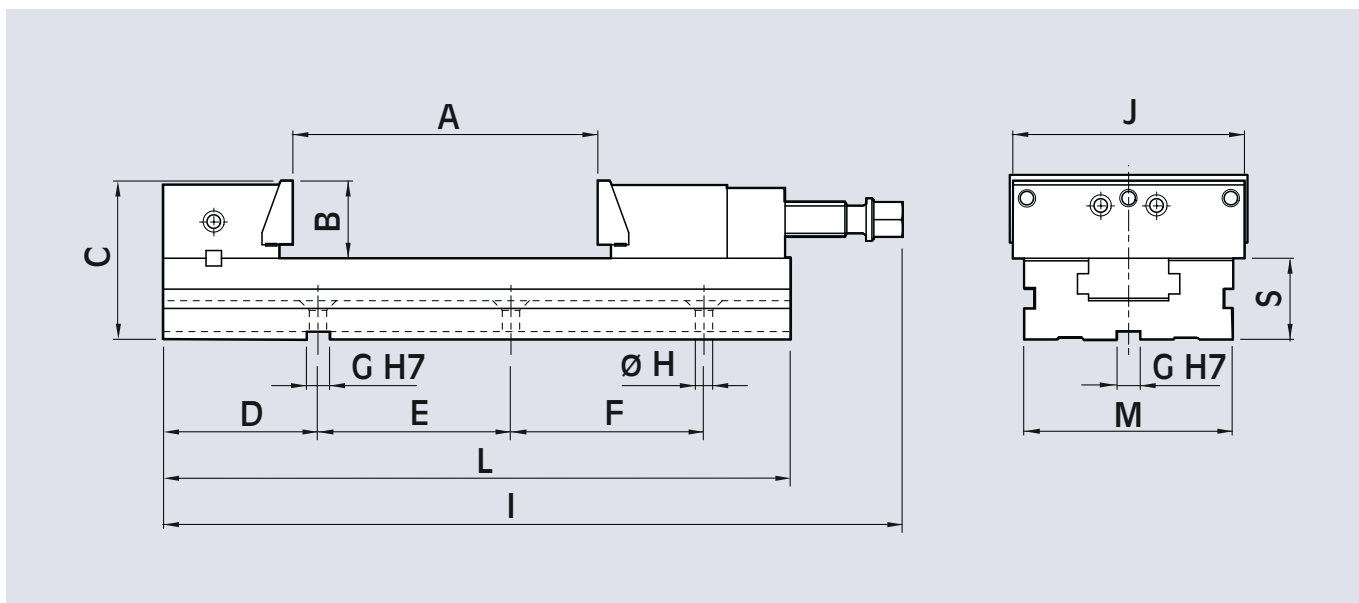
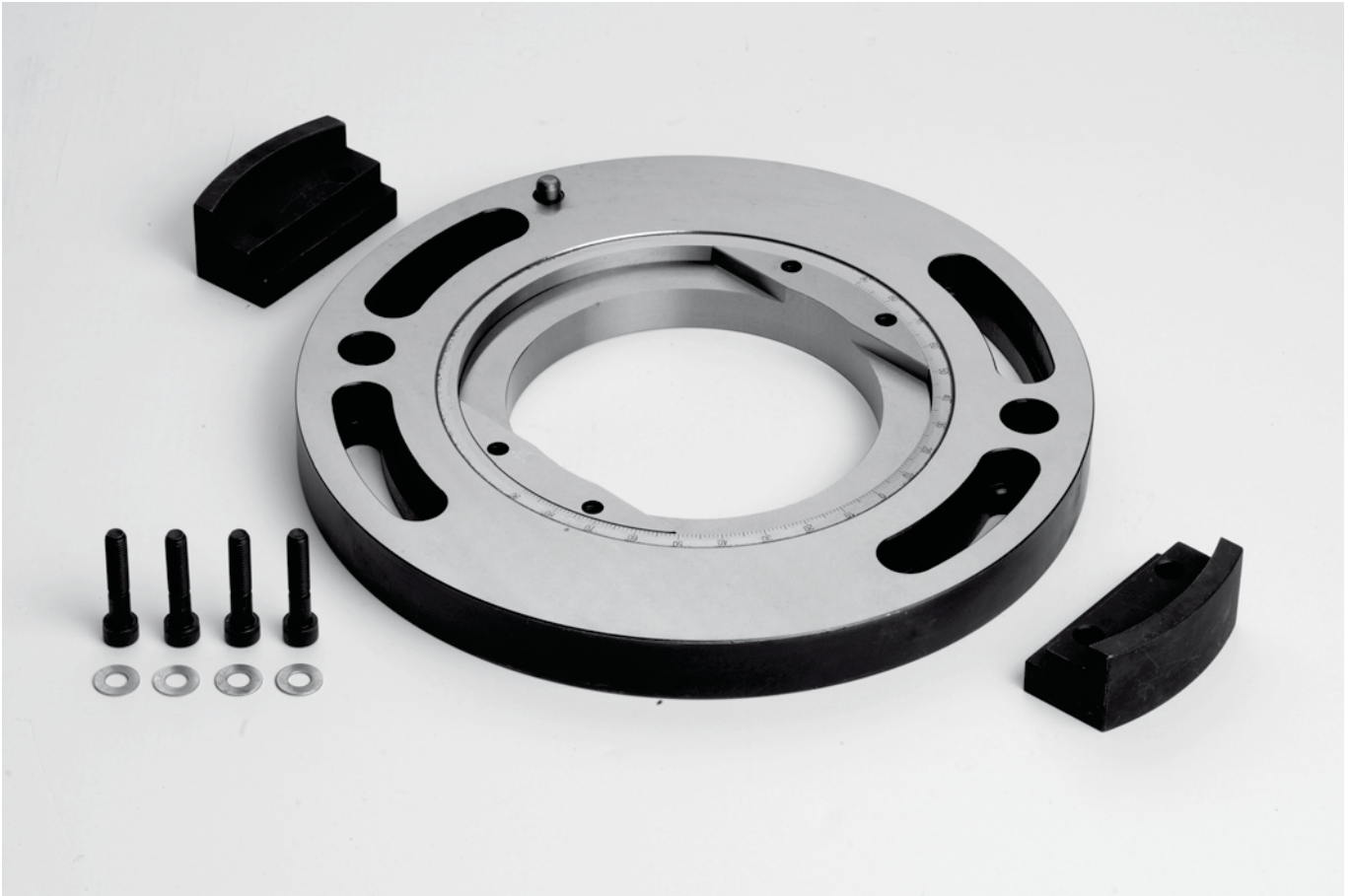


Clamping equipment LC complete with: wrench, rigid slide way (floating slide-way at request for raw workpiece), work stop, pair of positioning keys h6, cover for protection of the screw, 4 clamps, cardboard box.



| Code        | Type         | A<br>mm | B<br>mm | C<br>mm | D<br>mm | E<br>mm | F<br>mm | G<br>mm | H<br>mm | I<br>mm | J<br>mm | L<br>mm | M<br>mm | S<br>mm | Weight<br>kg |
|-------------|--------------|---------|---------|---------|---------|---------|---------|---------|---------|---------|---------|---------|---------|---------|--------------|
| 77 58 95 01 | LC 125 x 150 | 150     | 40      | 80      | 111     | 100     | 100     | 16      | 8,5     | 410     | 125     | 345     | 95      | 40      | 13           |
| 77 58 96 01 | LC 150 x 200 | 200     | 50      | 100     | 122,5   | 100     | 100     | 16      | 12,5    | 500     | 150     | 420     | 125     | 50      | 26           |
| 77 58 96 02 | LC 150 x 300 | 300     | 50      | 100     | 122,5   | 100     | 100     | 16      | 12,5    | 600     | 150     | 520     | 125     | 50      | 29           |
| 77 58 97 01 | LC 200 x 300 | 300     | 65      | 135     | 145     | 100     | 100     | 16      | 12,5    | 680     | 200     | 595     | 170     | 70      | 69           |
| 77 58 97 02 | LC 200 x 400 | 400     | 65      | 135     | 145     | 100     | 100     | 16      | 12,5    | 780     | 200     | 695     | 170     | 70      | 74           |

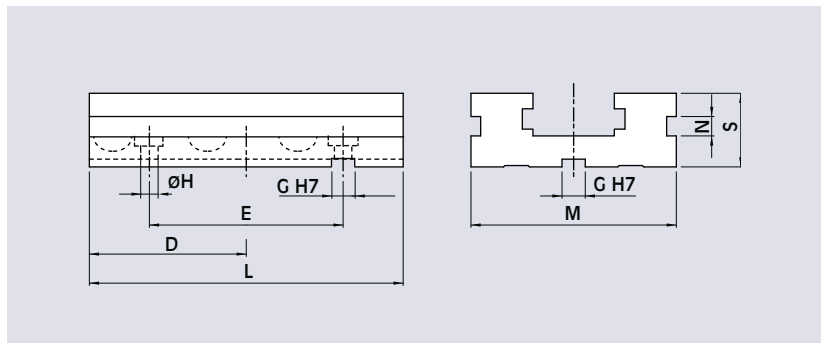
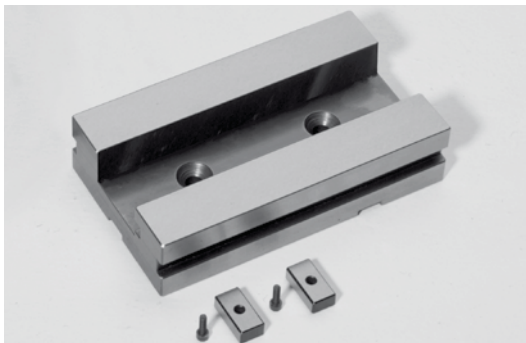
## Swivel base for clamping equipment LC



| Code        | for type |
|-------------|----------|
| 77 58 95 50 | LC 125   |
| 77 58 96 50 | LC 150   |
| 77 58 97 50 | LC 200   |

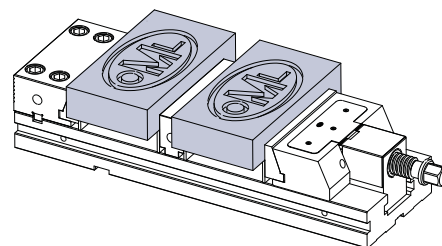
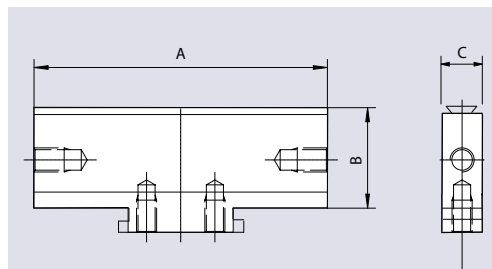
## LC extension element

with pair of positioning keys (at customer's choice)



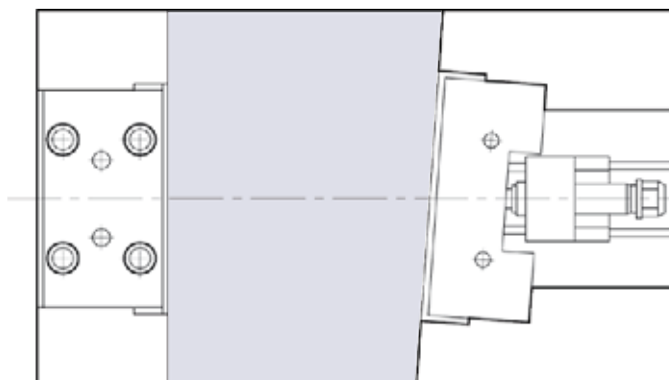
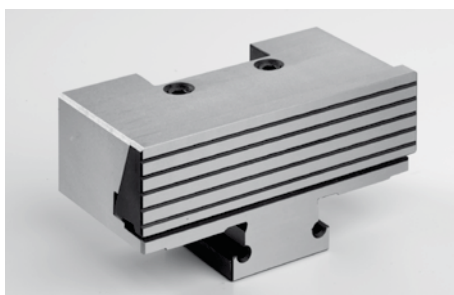
| Code        | for type | D<br>mm | E<br>mm | G<br>mm | H<br>mm | L<br>mm | M<br>mm | S<br>mm |
|-------------|----------|---------|---------|---------|---------|---------|---------|---------|
| 58 95 17 00 | LC 125   | 40      | 40      | 16      | 8,5     | 160     | 95      | 40      |
| 58 96 17 00 | LC 150   | 40      | 50      | 16      | 13      | 230     | 125     | 50      |
| 58 97 17 00 | LC 200   | 50      | 100     | 16      | 17      | 300     | 170     | 70      |

## Middle jaw LC

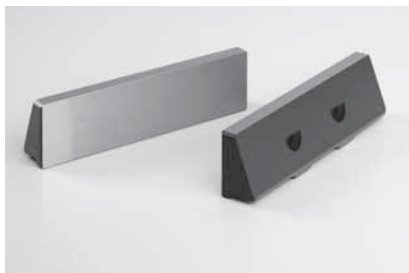


| Code        | for type | E<br>mm | F<br>mm | G<br>mm | H<br>mm | I<br>mm |
|-------------|----------|---------|---------|---------|---------|---------|
| 58 95 41 10 | LC 125   | 121     | 38      | 33      | 10      | 30      |
| 58 96 41 10 | LC 150   | 146     | 48      | 43      | 10      | 30      |
| 58 97 41 10 | LC 200   | 196     | 68      | 53      | 10      | 30      |

## Floating movable support with jaw LC

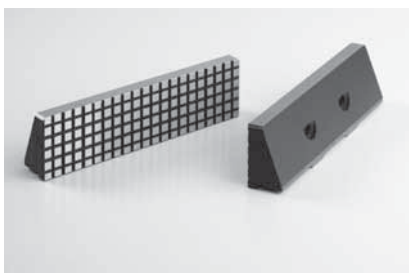


| Code        | for type |
|-------------|----------|
| 58 95 73 50 | LC 125   |
| 58 96 73 50 | LC 150   |
| 58 97 73 50 | LC 200   |



### Pair of smooth jaws LC

| Code        | for type |
|-------------|----------|
| 58 95 04 09 | LC 125   |
| 58 96 04 09 | LC 150   |
| 58 97 04 09 | LC 200   |



### Pair of serrated jaws LC

| Code        | for type |
|-------------|----------|
| 58 95 44 29 | LC 125   |
| 58 96 44 29 | LC 150   |
| 58 97 44 29 | LC 200   |

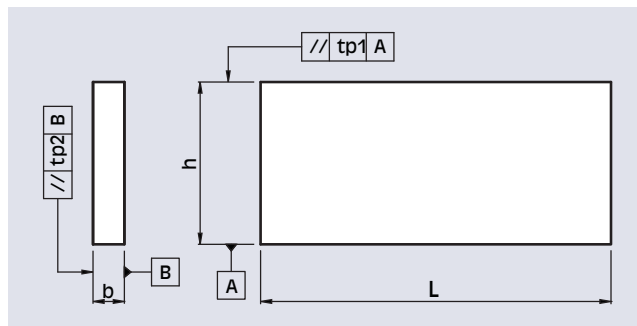


### Insert for vertical use

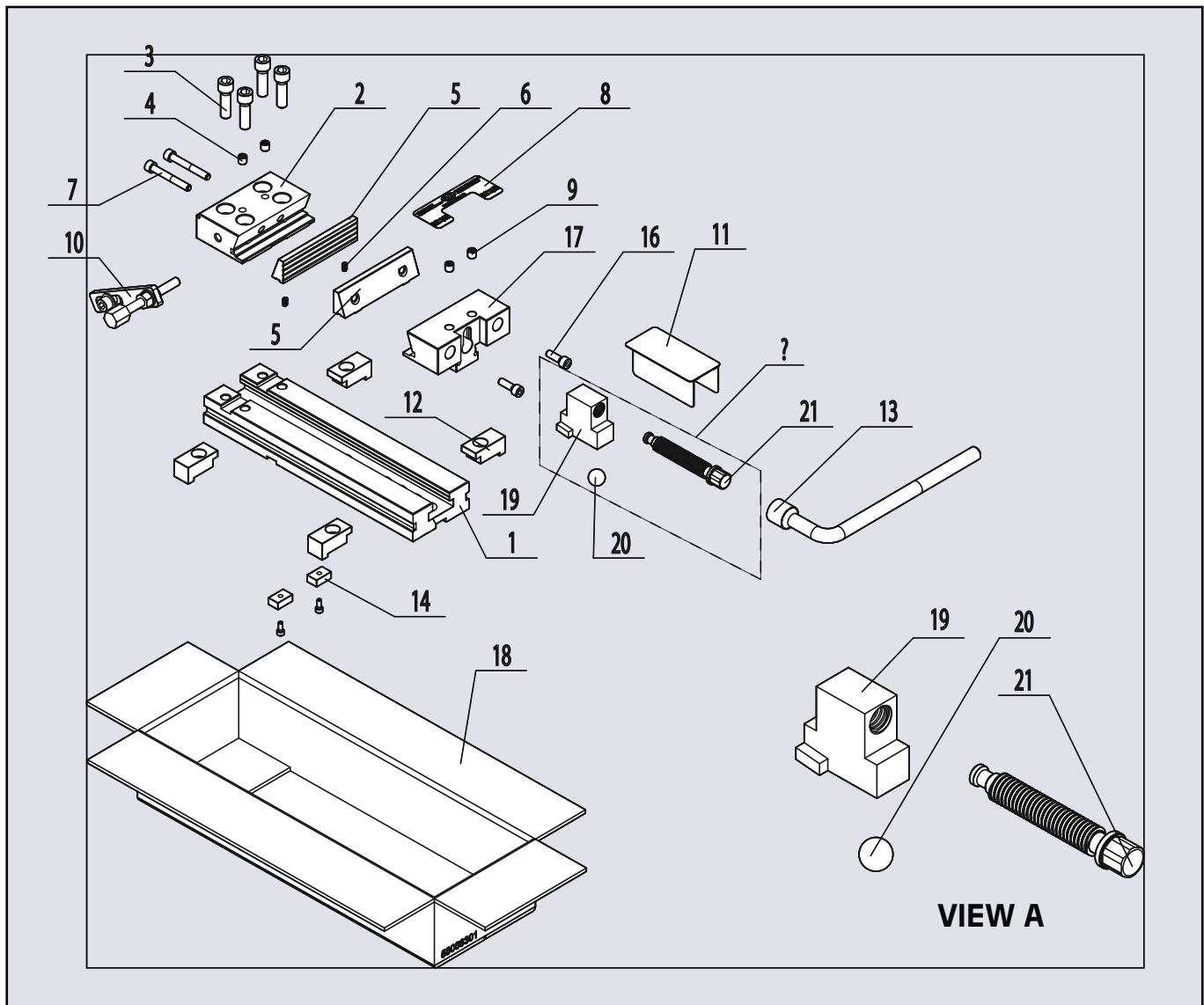
| code        | for type |
|-------------|----------|
| 58 95 33 00 | LC 125   |
| 58 96 33 00 | LC 150   |
| 58 97 33 00 | LC 200   |



### Set of 6 pairs of parallels (no clak) LC



| code        | for type | h<br>mm                     | L<br>mm | B<br>mm | tolerance |       |
|-------------|----------|-----------------------------|---------|---------|-----------|-------|
|             |          |                             |         |         | A         | B     |
| 58 96 92 06 | LC 150   | 25 - 30 - 35 - 40 - 45 - 47 | 150     | 8       | 0,009     | 0,005 |
| 58 97 92 06 | LC 200   | 40 - 45 - 50 - 55 - 60 - 62 | 200     | 8       | 0,009     | 0,005 |

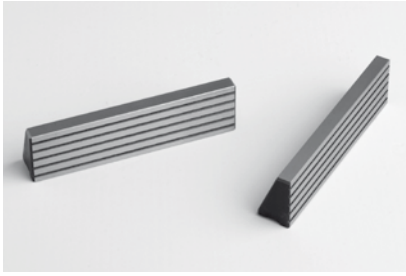


|    |                                   |   |
|----|-----------------------------------|---|
| 21 | Clamping screw                    | 1 |
| 20 | Positioning ball                  | 1 |
| 19 | Block for clamping screw          | 1 |
| 18 | Cardboard box                     | 1 |
| 17 | Guided movable support            | 1 |
| 16 | Screw TCEI                        | 2 |
| 15 | Screw TCEI                        | 2 |
| 14 | Positioning key                   | 2 |
| 13 | Wrench                            | 1 |
| 12 | Set 4 clamps                      | 4 |
| 11 | Cover for protection of the screw | 1 |
| 10 | Workstop                          | 1 |
| 9  | Screw STEI                        | 2 |
| 8  | Label                             | 1 |
| 7  | Screw TCEI                        | 2 |
| 6  | Spring                            | 4 |
| 5  | Grooved jaw                       | 2 |
| 4  | Screw STEI                        | 2 |
| 3  | Screw TCEI                        | 4 |
| 2  | Fixed support                     | 1 |
| 1  | Base                              | 1 |

Pos.

Description

Quantity



### Pair of grooved jaws

| Code        | for type |  |
|-------------|----------|--|
| 58 95 44 09 | LC 125   |  |
| 58 96 44 09 | LC 150   |  |
| 58 97 44 09 | LC 200   |  |



### Fixed support with jaw

| Code        | for type |  |
|-------------|----------|--|
| 58 95 72 10 | LC 125   |  |
| 58 96 72 10 | LC 150   |  |
| 58 97 72 10 | LC 200   |  |



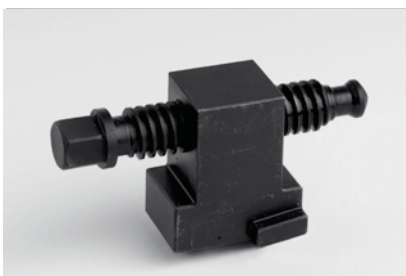
### Guided with jaw

| Code        | for type |  |
|-------------|----------|--|
| 58 95 73 60 | LC 125   |  |
| 58 96 73 60 | LC 150   |  |
| 58 97 73 60 | LC 200   |  |



### Wrench

| Code        | for type |  |
|-------------|----------|--|
| 58 95 19 00 | LC 125   |  |
| 58 96 19 00 | LC 150   |  |
| 58 97 19 00 | LC 200   |  |



### Complete clamping block

| Code        | for type |  |
|-------------|----------|--|
| 58 95 74 10 | LC 125   |  |
| 58 96 74 10 | LC 150   |  |
| 58 97 74 10 | LC 200   |  |



### Block for clamping screw

| Code        | for type |  |
|-------------|----------|--|
| 58 95 12 10 | LC 125   |  |
| 58 96 12 10 | LC 150   |  |
| 58 97 12 10 | LC 200   |  |



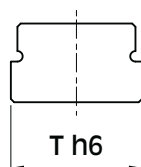
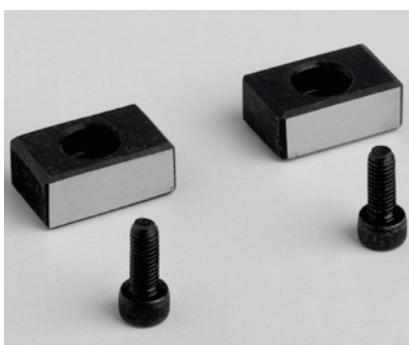
## Clamping screw

| Code        | for type |  |
|-------------|----------|--|
| 58 95 08 10 | LC 125   |  |
| 58 96 08 10 | LC 150   |  |
| 58 97 08 10 | LC 200   |  |



## Positioning ball

| Code        | for type |  |
|-------------|----------|--|
| 58 95 10 00 | LC 125   |  |
| 58 96 10 00 | LC 150   |  |
| 58 97 10 00 | LC 200   |  |



## Pair of positioning keys

| Code        | T h6  | for type                 |
|-------------|-------|--------------------------|
| 58 96 13 92 | 16/12 | LC 125 - LC 150 - LC 200 |
| 58 96 13 93 | 16/14 |                          |
| 58 96 13 94 | 16/16 |                          |
| 58 96 13 95 | 16/18 |                          |
| 58 96 13 96 | 16/20 |                          |
| 58 96 13 97 | 16/22 |                          |



## Work stop

| Code        | for type |  |
|-------------|----------|--|
| 58 95 50 00 | LC 125   |  |
| 58 96 50 00 | LC 150   |  |
| 58 97 50 00 | LC 200   |  |



## Cover for protection of the screw

| Code        | for type |  |
|-------------|----------|--|
| 58 95 28 10 | LC 125   |  |
| 58 96 28 10 | LC 150   |  |
| 58 97 28 10 | LC 200   |  |



## Set of 2 pairs of clamps

| Code        | for type |  |
|-------------|----------|--|
| 58 95 27 09 | LC 125   |  |
| 58 96 27 09 | LC 150   |  |
| 58 97 27 09 | LC 200   |  |