



Ultra Live Center RNW

Clamping tools for clamping on machine tools

NEIDLEIN ultra live centers type RNW are designed for employment in turning and other production machines.

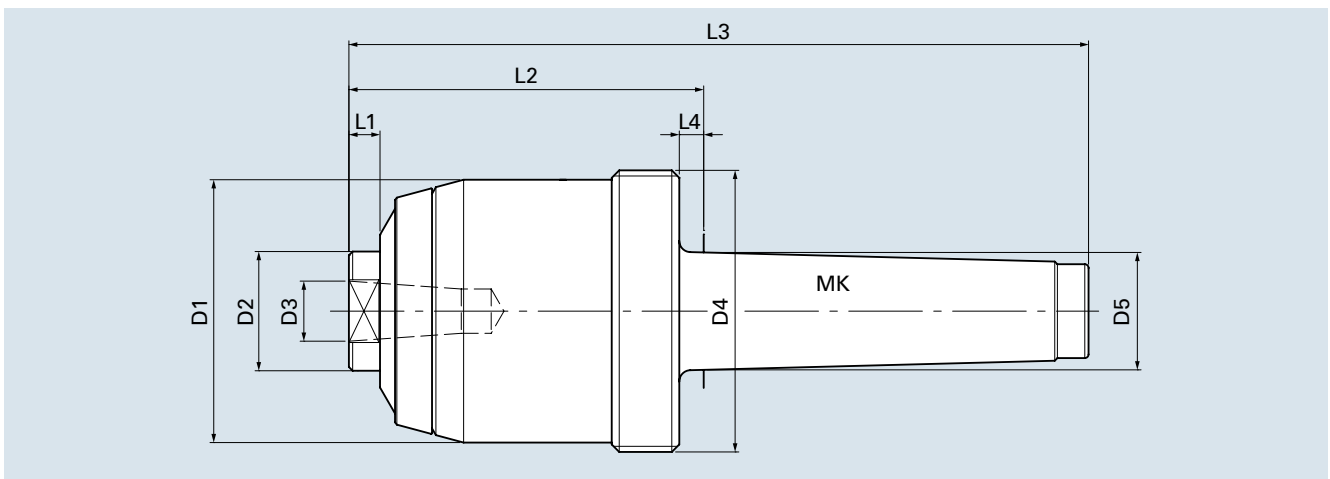
➔ maximum flexibility

The adaptation of various changeable inserts ensures a high degree of flexibility and saving of costs.

Various changeable inserts of different designs, see page 17.

Special inserts available upon customer's request.

Type RNW with morse taper



| cat. no. | type | MK | D1 | D2 | D3 | D4 | D5 | L1 | L2 | L3 | L4 | rpm max. [1/min] | weight of work piece max. [kg] | axial load max. [daN] |
|----------|----------|----|-----|----|----|-----------|-------|------|-------|-----|-----|------------------|--------------------------------|-----------------------|
| 81501 | RNW3 MK3 | 3 | 55 | 22 | 16 | M58 x 1.5 | 23.83 | 6.3 | 82 | 163 | 5 | 8000 | 440 | 500 |
| 81502 | RNW3 MK4 | 4 | 55 | 22 | 16 | M58 x 1.5 | 31.27 | 6.3 | 83.5 | 186 | 6.5 | 8000 | 440 | 500 |
| 81503 | RNW3 MK5 | 5 | 55 | 22 | 16 | M58 x 1.5 | 44.40 | 6.3 | 83.5 | 213 | 6.5 | 8000 | 440 | 500 |
| 81504 | RNW4 MK4 | 4 | 70 | 32 | 16 | M75 x 1.5 | 31.27 | 8.3 | 94.5 | 197 | 6.5 | 7000 | 700 | 800 |
| 81505 | RNW4 MK5 | 5 | 70 | 32 | 16 | M75 x 1.5 | 44.40 | 8.3 | 94.5 | 224 | 6.5 | 7000 | 700 | 800 |
| 81506 | RNW5 MK5 | 5 | 92 | 45 | 22 | M95 x 2 | 44.40 | 10.3 | 106.5 | 236 | 6.5 | 5000 | 1400 | 1500 |
| 81507 | RNW5 MK6 | 6 | 92 | 45 | 22 | M95 x 2 | 63.35 | 10.3 | 108 | 290 | 8 | 5000 | 1400 | 1500 |
| 81508 | RNW6 MK6 | 6 | 107 | 55 | 22 | M110 x 2 | 63.35 | 10.3 | 120 | 302 | 8 | 3000 | 2000 | 2000 |

NEIDLEIN revolving ultra live centers type RNW ensure:

- Application of live centers in case of high thrust and loading.
- true running accuracy max. 0.01
- Easy exchange of changeable inserts using spanner flat and open-end wrench or Tommy bar.
- Maintenance-free, due to gasket system and life-time lubrication of bearings. Gasket system comprising variable seal and steel comprehensive protection cover.
- Excellent demounting by means of extracting nut and extracting disk, which ensures safe and easy removal of the live center from the tailstock spindle sleeve.

Extracting nuts and extracting disks see page 19 for accessories.