

# Ultra Live Center RNC

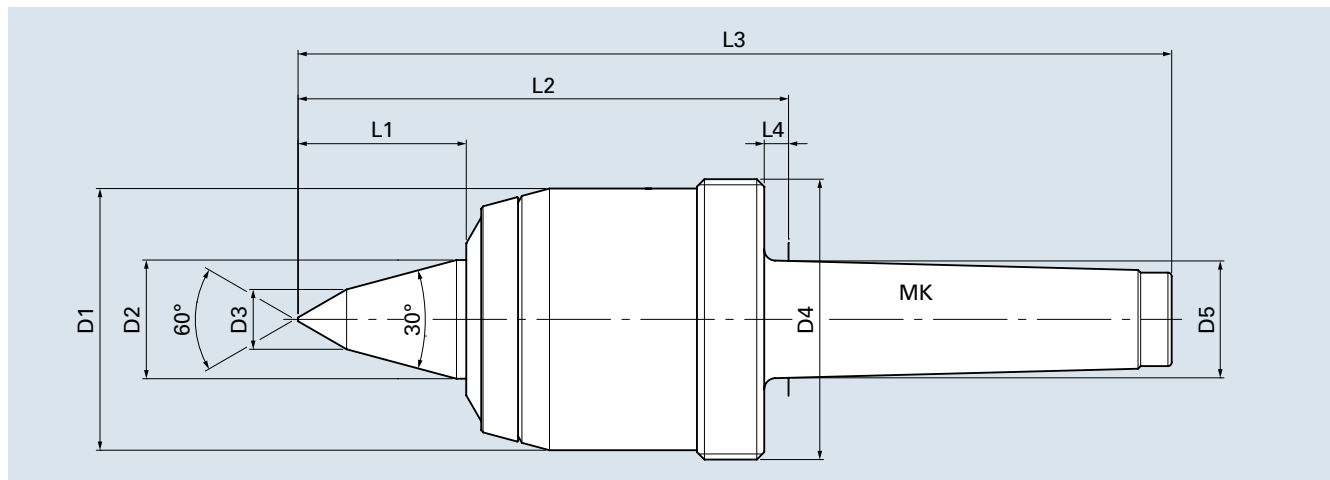
## Clamping tools for clamping on machine tools

NEIDLEIN ultra live centers are designed for employment in turning, grinding and other production machines.

### → extended tooling space

For better access of cutting tools in case of limited tooling space.

Type RNC with morse taper



cat. no. turning	cat. no. grinding	type	MK	D1	D2	D3	D4	D5	L1	L2	L3	L4	rpm max. [1/min]	weight of work piece max. [kg]	axial load max. [daN]
81301	8130102	RNC3 MK3	3	55	22	10	M58 x 1.5	23.83	32	108	189	5	8000	440	500
81302	8130202	RNC3 MK4	4	55	22	10	M58 x 1.5	31.27	32	109.5	212	6.5	8000	440	500
81303	8130302	RNC3 MK5	5	55	22	10	M58 x 1.5	44.40	32	109.5	239	6.5	8000	440	500
81304	8130402	RNC4 MK4	4	70	32	16	M75 x 1.5	31.27	45	131.2	233.7	6.5	7000	700	800
81305	8130502	RNC4 MK5	5	70	32	16	M75 x 1.5	44.40	45	131.2	260.7	6.5	7000	700	800
81306	8130602	RNC5 MK5	5	92	45	22	M95 x 2	44.40	62	158.2	287.7	6.5	5000	1400	1500
81307	8130702	RNC5 MK6	6	92	45	22	M95 x 2	63.35	62	159.7	341.7	8	5000	1400	1500
81308	8130802	RNC6 MK6	6	107	55	28	M110 x 2	63.35	72	181.7	363.7	8	3000	2000	2000

## NEIDLEIN revolving ultra live centers type RNC ensure:

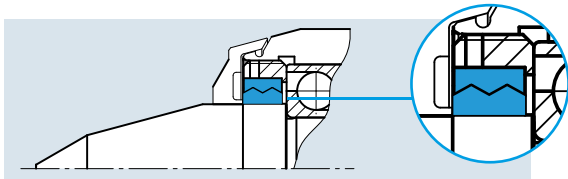
- Application of live centers in case of high thrust and loading.
- high true running accuracy  
max. **0.005** turning type  
max. **0.003** grinding type
- enhanced true running accuracy **HQ**  
All our specified live centers can be obtained with enhanced true running accuracy of **max. 0.002**.  
cat. no. = 813XX1  
e.g. RN4 MK4 type HQ    cat. no. 813041
- Maintenance-free, due to gasket system and lifetime lubrication of bearings. Gasket system comprising variable seal and steel protection cover.
- Excellent demounting by means of extracting nut and extracting disk, which ensures safe and easy removal of the live center from the tailstock spindle sleeve.

Extracting nuts and extracting disks see page 19 for accessories.



### Type turning

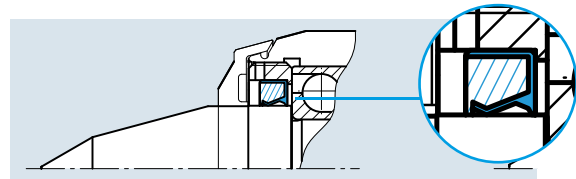
- with contact-free labyrinth seal



- true running accuracy max. 0.005 guaranteed

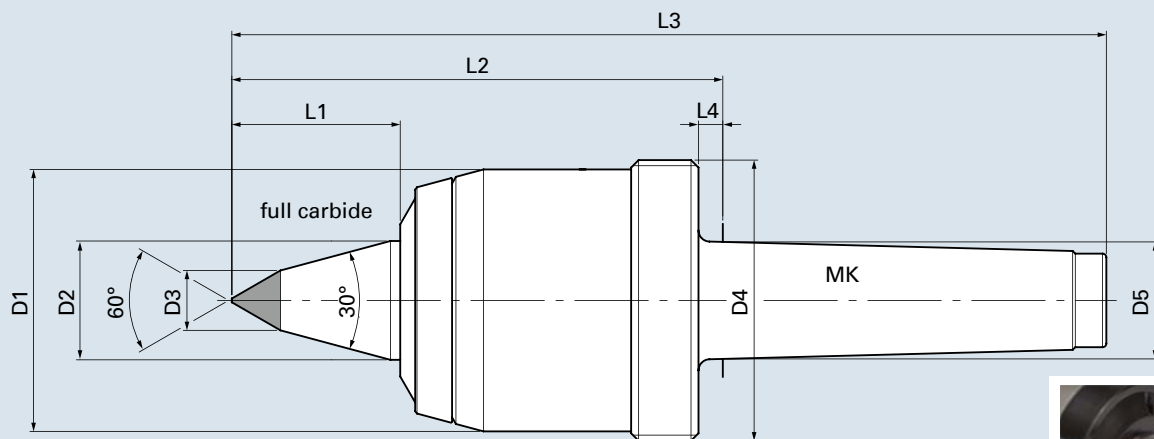
### Type grinding

- with contact shaft seal



- true running accuracy max. 0.003 guaranteed

### Type RNC with carbide tip for hardened work pieces



### Live centers with carbide tip

cat. no. turning	cat. no. grinding	type carbide	MK	D1	D2	D3	D4	D5	L1	L2	L3	L4	rpm max. [1/min]	weight of work piece max. [kg]	axial load max. [daN]
8130104	8130106	RNC3 MK3	3	55	22	10	M58 x 1.5	23.83	32	108	189	5	8000	440	500
8130204	8130206	RNC3 MK4	4	55	22	10	M58 x 1.5	31.27	32	109.5	212	6.5	8000	440	500
8130304	8130306	RNC3 MK5	5	55	22	10	M58 x 1.5	44.40	32	109.5	239	6.5	8000	440	500
8130404	8130406	RNC4 MK4	4	70	32	16	M75 x 1.5	31.27	45	131.2	233.7	6.5	7000	700	800
8130504	8130506	RNC4 MK5	5	70	32	16	M75 x 1.5	44.40	45	131.2	260.7	6.5	7000	700	800
8130604	8130606	RNC5 MK5	5	92	45	22	M95 x 2	44.40	62	158.2	287.7	6.5	5000	1400	1500
8130704	8130706	RNC5 MK6	6	92	45	22	M95 x 2	63.35	62	159.7	341.7	8	5000	1400	1500
8130804	8130806	RNC6 MK6	6	107	55	28	M110 x 2	63.35	72	181.7	363.7	8	3000	2000	2000

Extracting nuts and extracting disks see page 19 for accessories.